



# SCORPION

---

Raccords et tuyaux  
pour air  
*Fittings and pipes  
for air*

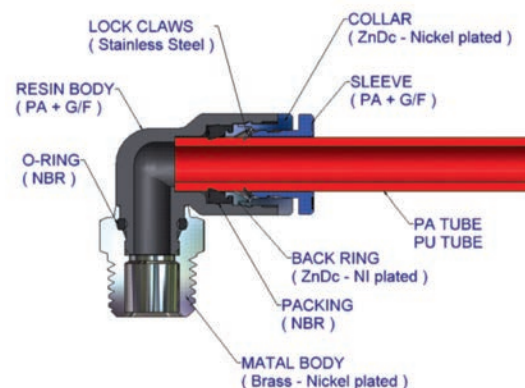
## Applications

- Les raccords Scorpion sont utilisés pour les tubulures pneumatiques.
- Pour une utilisation sur une très large variété de modèles afin de combler tout vos besoins.
- *One-touch joints used in pneumatic piping.*
- *Used for a wide variety of models to meet all needs.*

## Caractéristiques / Features

- Connexion/déconnexion facile du tube par simple pression.
- Le modèle PC est pratique pour le raccordement dans les espaces restreints grâce à son usinage hexagonal interne.
- La manchette ovale permet d'insérer et de retirer le tube facilement dans les espaces confinés.
- Les raccords sont équipés d'un joint d'étanchéité, d'un joint torique et d'un traitement au Téflon déjà appliqué sur le filetage.
- *Easy to connect/disconnect tube by one touch.*
- *PC type is useful for piping in confined space, given its six-angle wrench processing inside.*
- *Elliptical sleeve makes it possible to apply and remove the tube easily in confined space.*
- *Fittings are equipped with a Gasket, O-ring and Teflon-Treatment already on the thread.*

## Schéma structurel / Structural Diagram



## Spécification / Specifications

Fluide / Fluid	AIR (pas d'autres gaz ni liquides / no other gases or liquids)	
Plage de pression de service / Working Pressure Range	0-284PSI	0 ~ 20Kgf/cm <sup>2</sup> (0~1960kPa)
Pression négative / Negative Pressure	-29.5 in Hg	-750mmHg (10Torr)
Plage de température / Temperature Range	32 ~ 176°F	0 ~ 80°C
Matériau de tube applicable / Applicable Tube Material	Polyuréthane et nylon / Polyurethane and Nylon	

## Raccords en polymère série P pour tuyau métrique Polymer Fittings "P" series for metric tube

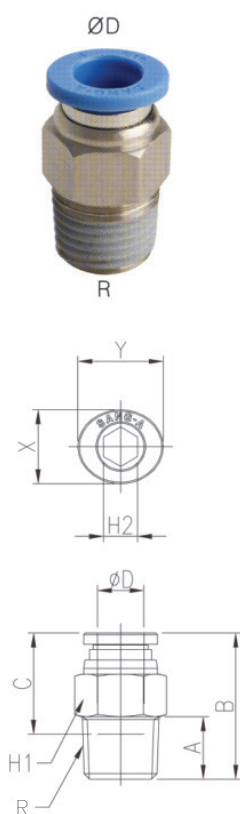
# P

Raccords /  
Fittings

Filets métriques (R) / Metric thread (R)

# P1

Adapteur droit mâle  
Straight male adapter



Modèle / Model	ØD	R	A	B	C	H1 (mm)	H2	X	Y	Orifice (ømm)	Poids/ weight (g)
P1.04.M5	4	M5	4	20.1	14.5	8	2	8.6	10.8	2	4.5
P1.04.M6	4	M6	5	21.1	14.5	9	3	8.6	10.8	3	6.3
P1.04.1/8	4	R1/8	8	20.1	14.5	10	3	8.6	10.8	3	8.6
P1.04.1/4	4	R1/4	11	20.1	14.5	14	3	8.6	10.8	3	17.3
P1.04.3/8	4	R3/8	12	21.1	14.5	17	3	8.6	10.8	3	30.0
P1.06.M5	6	M5	4	21.8	15.5	11	2	11	13	2	8.3
P1.06.M6	6	M6	5	22.8	15.5	11	3	11	13	3	8.0
P1.06.1/8	6	R1/8	8	22	15.5	11	4	11	13	4	9.2
P1.06.1/4	6	R1/4	11	22.8	15.5	14	4	11	13	4	18.2
P1.06.3/8	6	R3/8	12	21.8	15.5	17	4	11	13	4	28.4
P1.06.1/2	6	R1/2	15	25.8	15.5	21	4	11	13	4	54.4
P1.08.1/8	8	R1/8	8	27.7	17.8	13	5	13	15	5	13.7
P1.08.1/4	8	R1/4	11	25.7	17.8	14	6	13	15	6	17.1
P1.08.3/8	8	R3/8	12	23.7	17.8	17	6	13	15	6	27.3
P1.08.1/2	8	R1/2	15	26.7	17.8	21	6	13	15	6	51.8
P1.10.1/8	10	R1/8	8	29.4	19.4	17	5	16	18.5	5	22.2
P1.10.1/4	10	R1/4	11	32.4	19.4	17	6	16	18.5	6	27.6
P1.10.3/8	10	R3/8	12	28.4	19.4	17	8	16	18.5	8	29.3
P1.10.1/2	10	R1/2	15	27.3	19.4	21	8	16	18.5	8	48.5
P1.12.1/8	12	R1/8	8	32.4	22.4	19	5	19.5	22.5	5	28.9
P1.12.1/4	12	R1/4	11	35.4	22.4	19	6	19.5	22.5	6	34.2
P1.12.3/8	12	R3/8	12	31.8	22.4	19	8	19.5	22.5	8	33.5
P1.12.1/2	12	R1/2	15	33.8	22.4	21	8	19.5	22.5	8	54.8
P1.16.3/8	16	R3/8	12	39.7	25	24	8	24	27	8	58.7
P1.16.1/2	16	R1/2	15	42.2	25	24	10	24	27	10	58.2

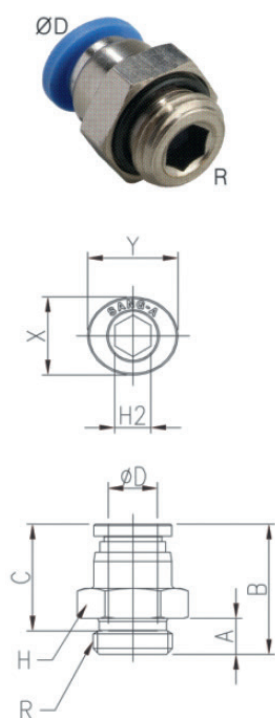
561, rue Édouard, Granby (QC) J2G 3Z5 TÉL.: 1 800 665-3565  
[www.mscorpion.com](http://www.mscorpion.com) | [www.scorpionmfg.com](http://www.scorpionmfg.com)

## Raccords en polymère série P pour tuyau métrique Polymer Fittings "P" series for metric tube

Filets métriques (G) / Metric thread (G)

# P1G

Adapteur droit mâle avec o-ring  
Straight male adapter with o-ring



Modèle / Model	ØD	R	A	B	C	H1 (mm)	H2	X	Y	Orifice (ømm)	Poids/ weight (g)
P1G.04.1/8	4	G1/8	5	18.4	14.5	13	3	8.6	10.8	3	8.4
P1G.04.1/4	4	G1/4	6	18.1	14.5	16	3	8.6	10.8	3	14.3
P1G.06.1/8	6	G1/8	5	23.1	15.5	13	4	11	13	4	10.7
P1G.06.1/4	6	G1/4	6	19.8	15.5	16	4	11	13	4	14.2
P1G.06.3/8	6	G3/8	7	18.8	15.5	20	4	11	13	4	23.1
P1G.08.1/8	8	G1/8	5	26	17.8	13	5	13	15	5	12.5
P1G.08.1/4	8	G1/4	6	21.7	17.8	16	6	13	15	6	14.1
P1G.08.3/8	8	G3/8	7	22.7	17.8	20	6	13	15	6	25.1
P1G.10.1/8	10	G1/8	5	27.6	19.4	16	5	16	18.5	5	18.0
P1G.10.1/4	10	G1/4	6	28.3	19.4	16	6	16	18.5	6	20.7
P1G.10.3/8	10	G3/8	7	24.3	19.4	20	8	16	18.5	8	22.6

## Raccords en polymère série P pour tuyau métrique Polymer Fittings "P" series for metric tube

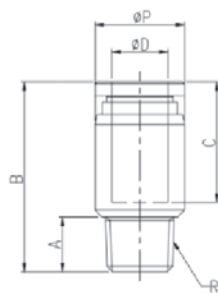
# P

Raccords /  
Fittings

Filets métriques (R) / Metric thread (R)

# P1R

### Adapteur rond droit mâle Round straight male adapter

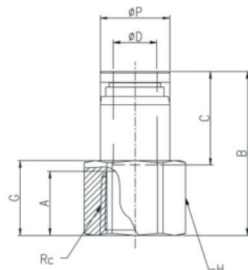
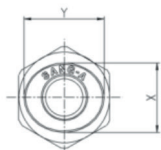
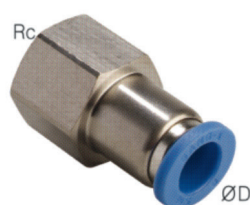


Modèle / Model	ØD	R	ØP	A	B	C	H	X	Y	Orifice (ømm)	Poids/weight (g)
P1R.04.M5	4	M5	8.2	4	20.1	14.5	2	8.6	10.8	2	4.2
P1R.04.1/8	4	R1/8	10	8	20.1	14.5	3	8.6	10.8	3	8.0
P1R.04.1/4	4	R1/4	13.5	11	20.1	14.5	3	8.6	10.8	3	16.6
P1R.04.3/8	4	R3/8	17	12	21.1	14.5	3	8.6	10.8	3	29.2
P1R.06.M5	6	M5	11	4	21.8	15.5	2	11	13	2	7.2
P1R.06.1/8	6	R1/8	11	8	22	15.5	4	11	13	4	8.6
P1R.06.1/4	6	R1/4	13.5	11	22.8	15.5	4	11	13	4	16.8
P1R.06.3/8	6	R3/8	17	12	21.8	15.5	4	11	13	4	27.8
P1R.08.1/8	8	R1/8	13	8	27.7	17.8	5	13	15	5	13.1
P1R.08.1/4	8	R1/4	13.5	11	25.7	17.8	6	13	15	6	15.5
P1R.08.3/8	8	R3/8	17	12	23.7	17.8	6	13	15	6	25.9
P1R.08.1/2	8	R1/2	21	15	26.7	17.8	6	13	15	6	50.5
P1R.10.1/8	10	R1/8	15.5	8	29.4	19.4	5	16	18.5	5	18
P1R.10.1/4	10	R1/4	15.5	11	32.4	19.4	6	16	18.5	6	23.3
P1R.10.3/8	10	R3/8	17	12	28.4	19.4	8	16	18.5	8	25.7
P1R.10.1/2	10	R1/2	21	15	27.3	19.4	8	16	18.5	8	46.7
P1R.12.1/8	12	R1/8	18.8	8	32.4	22.4	5	19.5	22.5	5	24.5
P1R.12.1/4	12	R1/4	18.8	11	35.4	22.4	6	19.5	22.5	6	29.7
P1R.12.3/8	12	R3/8	18.8	12	31.8	22.4	8	19.5	22.5	8	30.2
P1R.12.1/2	12	R1/2	21	15	33.8	22.4	8	19.5	22.5	8	50.6

## Raccords en polymère série P pour tuyau métrique *Polymer Fittings "P" series for metric tube*

Filets métriques (R) / Metric thread (R)

### P2 Droit femelle Straight female



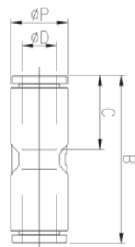
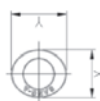
Modèle / Model	ØD	Rc	ØP	G	A	B	C	H	X	Y	Orifice (ømm)	Poids/ weight (g)
P2.04.1/8	4	R1/8	8.8	11	9	24.4	14.5	13	8.6	10.8	3.2	13.5
P2.04.1/4	4	R1/4	8.8	14	12	27.4	14.5	17	8.6	10.8	3.2	24.9
P2.04.3/8	4	R3/8	8.8	15	13	28.4	14.5	19	8.6	10.8	3.2	26.3
P2.06.1/8	6	R1/8	11	11	9	25.4	15.5	13	11	13	5	14.8
P2.06.1/4	6	R1/4	11	14	12	28.4	15.5	17	11	13	5	26.1
P2.06.3/8	6	R3/8	11	15	13	29.4	15.5	19	11	13	5	27.6
P2.08.1/8	8	R1/8	13	10	9	27.7	17.8	13	13	15	7	16.4
P2.08.1/4	8	R1/4	13	14	12	30.7	17.8	17	13	15	7	27.7
P2.08.3/8	8	R3/8	13	15	13	31.7	17.8	19	13	15	7	29.2
P2.08.1/2	8	R1/2	13	18	16	34.7	17.8	24	13	15	7	50.5
P2.10.1/8	10	R1/8	15.5	10	9	29.4	19.4	17	16	18.5	7	29.9
P2.10.1/4	10	R1/4	15.5	13	12	32.4	19.4	17	16	18.5	9	30.3
P2.10.3/8	10	R3/8	15.5	15	13	33.4	19.4	19	16	18.5	9	32.5
P2.10.1/2	10	R1/2	15.5	18	16	36.4	19.4	24	16	18.5	9	53.6
P2.12.1/4	12	R1/4	18.8	12	12	35.4	22.4	19	19.5	22.5	10	45.3
P2.12.3/8	12	R3/8	18.8	15	13	36.4	22.4	19	19.5	22.5	10	39.4
P2.12.1/2	12	R1/2	18.8	18	16	39.4	22.4	24	19.5	22.5	10	60.6
P2.16.1/2	16	R1/2	/	/	/	/	/	/	/	/	/	/

## Raccords en polymère série P pour tuyau métrique Polymer Fittings "P" series for metric tube

# P

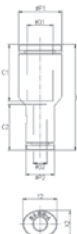
Raccords /  
Fittings

### P3 Union Union



Modèle / Model	ØD	ØP	B	C	X	Y	Orifice (ømm)	Poids/ weight (g)
P3.04	4	9	30.2	14.5	8.6	10.8	3.2	3.1
P3.06	6	11.2	32	15.5	11	13	5	4.8
P3.08	8	13.6	40.2	17.8	13	15	7	8.8
P3.10	10	16.3	40	19.4	16	18.5	9	10.6
P3.12	12	19.7	54.8	22.4	19.5	22.5	10	20.9
P3.16	16	25.6	52	25	24	27	14	32.8

### P3 Réducteur Reducer



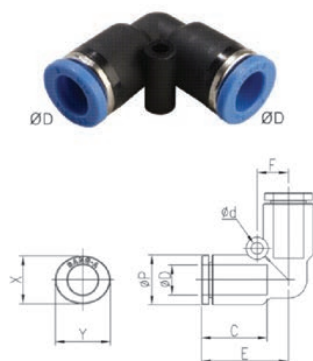
Modèle / Model	ØD1	ØD2	ØP1	ØP2	B	C1	C2	X1	Y1	X2	Y2	Orifice (ømm)	Poids/ weight (g)
P3.06.04	6	4	11.2	9	31.5	15.5	14.5	11	13	8.6	10.8	3.2	3.8
P3.08.04	8	4	13.6	9	33.3	17.8	14.5	13	15	8.6	10.8	3.2	4.9
P3.08.06	8	6	13.6	11.2	34.3	17.8	15.5	13	15	11	13	5	5.8
P3.10.06	10	6	16.3	11.2	35.9	19.4	15.5	16	18.5	11	13	5	7.2
P3.10.08	10	8	16.3	13.6	38.2	19.4	17.8	16	18.5	13	15	7	8.4
P3.12.08	12	8	19.7	13.6	41.2	22.4	17.8	19.5	22.5	13	15	7	12.4
P3.12.10	12	10	19.7	16.3	42.8	22.4	19.4	19.5	22.5	16	18.5	9	14.0
P3.16.12	16	12	25.6	19.7	48.9	25	22.4	24	27	19.5	22.5	10	23.4

561, rue Édouard, Granby (QC) J2G 3Z5 TÉL.: 1 800 665-3565  
[www.mscorpion.com](http://www.mscorpion.com) | [www.scorpionmfg.com](http://www.scorpionmfg.com)

# P4

## Coude connecteur

### Elbow connector



Modèle / Model	ØD	ØP	B	C	F	Ød	X	Y	Orifice (ømm)	Poids/ weight (g)
P4.04	4	9	17.1	14.5	6	3.2	8.6	10.8	3.2	3.2
P4.06	6	11.2	19	15.5	6.7	3.2	11	13	5	4.9
P4.08	8	13.6	23.6	17.8	8.5	3.2	13	15	7	9.4
P4.10	10	16.3	25	19.4	10	4.2	16	18.5	9	11.8
P4.12	12	19.7	32.2	22.4	12	4.2	19.5	22.5	10	22.5
P4.16	16	25.6	34	25	15	4.2	24	27	14	36.5

## Raccords en polymère série P pour tuyau métrique Polymer Fittings "P" series for metric tube

# P

Raccords /  
Fittings

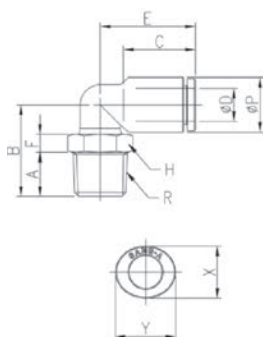
Filets métriques (R) / Metric thread (R)

# P4

## Coude mâle Male elbow



R



Modèle / Model	ØD	R	ØP	A	B	C	E	F	H	X	Y	Orifice (ømm)	Poids/ weight (g)
P4.04.M5	4	M5	9	4	14.6	14.5	17.1	4.4	9	8.6	10.8	2	4.6
P4.04.M6	4	M6	9	5	15.6	14.5	17.1	4.4	9	8.6	10.8	3	5.0
P4.04.1/8	4	R1/8	9	8	17.8	14.5	17.1	5	10	8.6	10.8	3.2	7.9
P4.04.1/4	4	R1/4	9	11	20.8	14.5	17.1	5	14	8.6	10.8	3.2	17.0
P4.06.M5	6	M5	11.2	4	15.7	15.5	18	4.4	9	11	13	2	5.4
P4.06.M6	6	M6	11.2	5	16.7	15.5	18	4.4	9	11	13	3	5.9
P4.06.1/8	6	R1/8	11.2	8	18.9	15.5	18	5	10	11	13	4	8.7
P4.06.1/4	6	R1/4	11.2	11	21.9	15.5	18	5	14	11	13	4	17.8
P4.06.3/8	6	R3/8	11.2	12	22.9	15.5	18	5	17	11	13	4	27.2
P4.06.1/2	6	R1/2	11.2	15	26.9	15.5	18	6	21	11	13	4	49.5
P4.08.1/8	8	R1/8	13.6	8	20.3	17.8	23.6	5	10	13	15	5.5	10.4
P4.08.1/4	8	R1/4	13.6	11	22.8	17.8	23.6	4.5	14	13	15	5.5	19.1
P4.08.3/8	8	R3/8	13.6	12	23.8	17.8	23.6	4.5	17	13	15	5.5	28.4
P4.08.1/2	8	R1/2	13.6	15	27.8	17.8	23.6	5.5	21	13	15	5.5	50.7
P4.10.1/8	10	R1/8	16.3	8	23.6	19.4	25	6.5	17	16	18.5	6	20.8
P4.10.1/4	10	R1/4	16.3	11	26.6	19.4	25	6.5	17	16	18.5	8	25.5
P4.10.3/8	10	R3/8	16.3	12	26.1	19.4	25	5	17	16	18.5	9	27.5
P4.10.1/2	10	R1/2	16.3	15	29.1	19.4	25	5	21	16	18.5	9	47.2
P4.12.1/8	12	R1/8	19.7	8	25.5	22.4	32.2	6.5	17	19.5	22.5	6	26.4
P4.12.1/4	12	R1/4	19.7	11	28.5	22.4	32.2	6.5	17	19.5	22.5	8	31.1
P4.12.3/8	12	R3/8	19.7	12	28	22.4	32.2	5	17	19.5	22.5	9.5	33.1
P4.12.1/2	12	R1/2	19.7	15	31	22.4	32.2	5	21	19.5	22.5	9.5	52.8
P4.16.3/8	16	R3/8	25.6	12	36	25	34	10.5	20	24	27	11	52.9
P4.16.1/2	16	R1/2	25.6	15	38.5	25	34	10	21	24	27	13	67.2

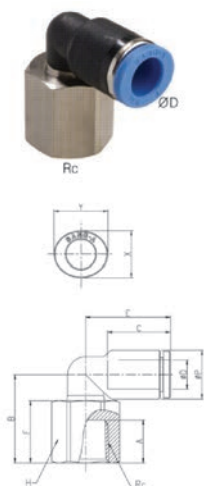
561, rue Édouard, Granby (QC) J2G 3Z5 TÉL.: 1 800 665-3565  
[www.mscorpion.com](http://www.mscorpion.com) | [www.scorpionmfg.com](http://www.scorpionmfg.com)

## Raccords en polymère série P pour tuyau métrique Polymer Fittings "P" series for metric tube

Filets métriques (R) / Metric thread (R)

### P4F

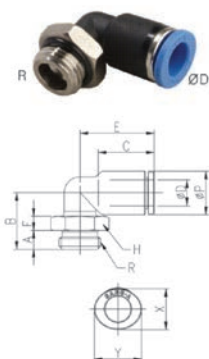
### Coude Femelle Female elbow



Modèle / Model	ØD	R	ØP	A	B	C	E	F	H	X	Y	Orifice (ømm)	Poids/ weight (g)
P4F.06.1/8	6	R1/8	11.2	9	19.7	15.5	18	13.8	13	11	13	4	15.5
P4F.06.1/4	6	R1/4	11.2	12	22.7	15.5	18	16.8	17	11	13	4	29.4
P4F.08.1/8	8	R1/8	13.6	9	21.7	17.8	23.6	14.4	13	13	15	5.5	17.9
P4F.08.1/4	8	R1/4	13.6	12	24.7	17.8	23.6	17.4	17	13	15	5.5	32.4

### P4G

### Coude mâle avec o-ring Male elbow with o-ring



Modèle / Model	ØD	R	ØP	A	B	C	E	F	H	X	Y	Orifice (ømm)	Poids/ weight (g)
P4G.04.1/8	4	G1/8	9	5	14.6	14.5	17.1	4.5	13	8.6	10.8	3.2	8.0
P4G.06.1/8	6	G1/8	11.2	5	15.7	15.5	18	4.5	13	11	13	4	8.8
P4G.06.1/4	6	G1/4	11.2	6	16.4	15.5	18	4.5	16	11	13	4	14.2
P4G.08.1/8	8	G1/8	13.6	5	19.6	17.8	23.6	7	13	13	15	5.5	13.3
P4G.08.1/4	8	G1/4	13.6	6	17.8	17.8	23.6	4.5	16	13	15	5.5	16.0
P4G.08.3/8	8	G3/8	13.6	7	18.8	17.8	23.6	4.5	20	13	15	5.5	24.1
P4G.10.1/8	10	G1/8	16.3	5	21.9	19.4	25	5.5	15	16	18.5	6	16.3
P4G.10.1/4	10	G1/4	16.3	6	22.6	19.4	25	7.5	16	16	18.5	8	20.1

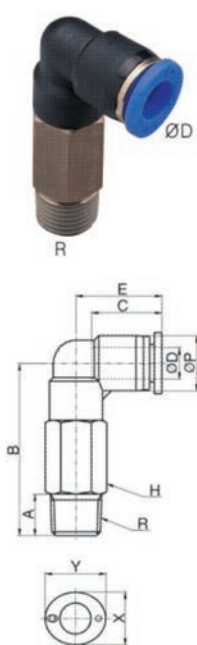
## Raccords en polymère série P pour tuyau métrique Polymer Fittings "P" series for metric tube

# P

Raccords /  
Fittings

Filets métriques (R) / Metric thread (R)

### P4L Union mâle Male Union



Modèle / Model	ØD	R	ØP	A	B	C	E	H	X	Y	Orifice (ømm)	Poids/ weight (g)
P4L.04.M5	4	M5	9	4	27.1	14.5	17.1	9	8.6	10.8	2	10.5
P4L.04.1/8	4	R1/8	9	8	30.3	14.5	17.1	10	8.6	10.8	3.2	14.7
P4L.04.1/4	4	R1/4	9	11	33.3	14.5	17.1	14	8.6	10.8	3.2	31.0
P4L.04.3/8	4	R3/8	9	12	34.3	14.5	17.1	17	8.6	10.8	3.2	44.4
P4L.06.M5	6	M5	11.2	4	28.2	15.5	18	9	11	13	2	11.4
P4L.06.1/8	6	R1/8	11.2	8	31.4	15.5	18	10	11	13	4	15.5
P4L.06.1/4	6	R1/4	11.2	11	34.4	15.5	18	14	11	13	4	31.8
P4L.06.3/8	6	R3/8	11.2	12	35.4	15.5	18	17	11	13	4	45.2
P4L.08.1/8	8	R1/8	13.6	8	35.3	17.8	23.6	10	13	15	5.5	18.6
P4L.08.1/4	8	R1/4	13.6	11	37.8	17.8	23.6	14	13	15	5.5	35.8
P4L.08.3/8	8	R3/8	13.6	12	38.8	17.8	23.6	17	13	15	5.5	50.0
P4L.08.1/2	8	R1/2	13.6	15	42.8	17.8	23.6	21	13	15	5.5	84.1
P4L.10.1/8	10	R1/8	16.3	8	44.8	19.4	25	17	16	18.5	6	55.0
P4L.10.1/4	10	R1/4	16.3	11	47.8	19.4	25	17	16	18.5	8	59.4
P4L.10.3/8	10	R3/8	16.3	12	47.3	19.4	25	17	16	18.5	9	58.2
P4L.10.1/2	10	R1/2	16.3	15	50.3	19.4	25	21	16	18.5	9	94.4
P4L.12.1/8	12	R1/8	19.7	8	46.65	22.4	32.2	17	19.5	22.5	6	60.6
P4L.12.1/4	12	R1/4	19.7	11	49.65	22.4	32.2	17	19.5	22.5	8	65.0
P4L.12.3/8	12	R3/8	19.7	12	49.15	22.4	32.2	17	19.5	22.5	9.5	63.8
P4L.12.1/2	12	R1/2	19.7	15	52.15	22.4	32.2	21	19.5	22.5	9.5	100.0

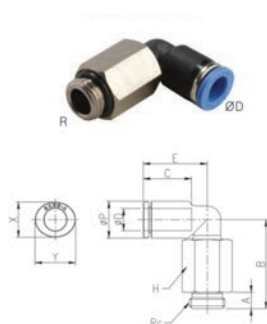
## Raccords en polymère série P pour tuyau métrique *Polymer Fittings "P" series for metric tube*

Filets métriques (R) / Metric thread (R)

Filets métriques (G) / Metric thread (G)

# P4LG

Coude extentionné avec o-ring  
Extended elbow with o-ring



Modèle / Model	ØD	R	ØP	A	B	C	E	H	X	Y	Orifice (ømm)	Poids/weight (g)
P4LG.04.1/8	4	G1/8	9	5	27.1	14.5	17.1	13	8.6	10.8	3.2	21.4
P4LG.06.1/8	6	G1/8	11.2	5	28.2	15.5	18	13	11	13	4	22.2
P4LG.06.1/4	6	G1/4	11.2	6	28.9	15.5	18	16	11	13	4	34.2
P4LG.08.1/8	8	G1/8	13.6	5	34.6	17.8	23.6	13	13	15	5.5	29.2
P4LG.08.1/4	8	G1/4	13.6	6	32.8	17.8	23.6	16	13	15	5.5	40.0
P4LG.10.1/4	10	G1/4	16.3	6	43.8	19.4	25	16	16	18.5	8	48.5

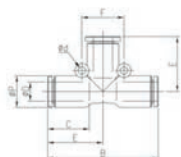
## Raccords en polymère série P pour tuyau métrique Polymer Fittings "P" series for metric tube

# P

Raccords /  
Fittings

# P5

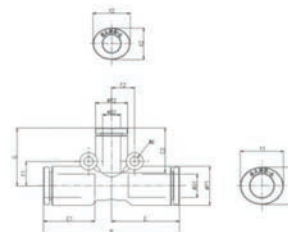
«T»



Modèle / Model	ØD	ØP	B	C	E	F	Ød	X	Y	Orifice (ømm)	Poids/ weight (g)
P5.04	4	9	34.2	14.5	17.1	12	3.2	8.6	10.8	3.2	5.0
P5.06	6	11.2	38	15.5	19	13	3.2	11	13	5	7.3
P5.08	8	13.6	47.2	17.8	23.6	18	3.2	13	15	7	14.1
P5.10	10	16.3	50	19.4	25	24	4.2	16	18.5	9	17.7
P5.12	12	19.7	64.4	22.4	32.2	28	4.2	19.5	22.5	10	33.5
P5.16	16	25.6	68	25	34	30	4.2	24	27	14	53.8

# P5

«T»  
2 Diameter



Modèle / Model	ØD1	ØD2	ØP1	ØP2	B	C1	C2	E	F1	F2	G	ØD	X1	Y1	X2	Y2	Orifice (ømm)	Poids/ weight (g)
P5D.06.04	6	4	11.2	9	37.9	15.5	14.5	19	6.5	6	18.1	3.2	11	13	8.6	11	3.2	6.2
P5D.08.06	8	6	13.6	11.2	47.2	17.8	15.5	23.6	8.5	8	20	3.2	13	15	11	13	5	10.0
P5D.10.08	10	8	16.3	13.6	50	19.4	17.8	25	10	9.5	24.1	4.2	16	19	13	15	7	14.7
P5D.12.10	12	10	19.7	16.3	64.4	22.4	19.4	32.2	12	10	25.5	4.2	19.5	23	16	19	9	25.6

561, rue Édouard, Granby (QC) J2G 3Z5 TÉL.: 1 800 665-3565  
[www.mscorpion.com](http://www.mscorpion.com) | [www.scorpionmfg.com](http://www.scorpionmfg.com)



# SCORPION

Raccords /  
Fittings

**P**

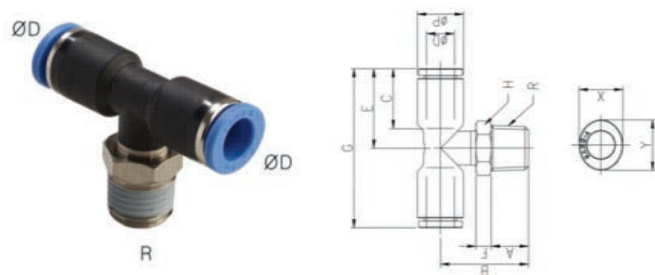
## Raccords en polymère série P pour tuyau métrique *Polymer Fittings "P" series for metric tube*

Filets métriques (R) / Metric thread (R)

**P5**

«T» mâle au centre

«T» centre male



Modèle / Model	ØD	R	ØP	A	B	C	E	F	G	H	X	Y	Orifice (ømm)	Poids/weight (g)
P5.04.M5	4	M5	9	4	16.6	14.5	17.1	4.4	34.2	9	8.6	10.8	2	6.2
P5.04.1/8	4	R1/8	9	8	19.8	14.5	17.1	5	34.2	10	8.6	10.8	3.2	9.5
P5.04.1/4	4	R1/4	9	11	22.8	14.5	17.1	5	34.2	14	8.6	10.8	3.2	18.7
P5.06.M5	6	M5	11.2	4	17.7	15.5	18	4.4	35.9	9	11	13	2	7.7
P5.06.1/8	6	R1/8	11.2	8	20.9	15.5	18	5	35.9	10	11	13	4	11.0
P5.06.1/4	6	R1/4	11.2	11	23.9	15.5	18	5	35.9	14	11			
P5.06.3/8	6	R3/8	11.2	12	24.9	15.5	18	5	35.9	17	11	13	4	29.5
P5.08.1/8	8	R1/8	13.6	8	23.5	17.8	23.6	5	47.2	10	13	15	5.5	14.9
P5.08.1/4	8	R1/4	13.6	11	26	17.8	23.6	4.5	47.2	14	13	15	5.5	23.6
P5.08.3/8	8	R3/8	13.6	12	27	17.8	23.6	4.5	47.2	17	13	15	5.5	32.9
P5.08.1/2	8	R1/2	13.6	15	31	17.8	23.6	5.5	47.2	21	13	15	5.5	55.2
P5.10.1/8	10	R1/8	16.3	8	25.8	19.4	25	6.5	50	17	16	18.5	6	26.3
P5.10.1/4	10	R1/4	16.3	11	28.8	19.4	25	6.5	50	17	16	18.5	8	31.0
P5.10.3/8	10	R3/8	16.3	12	28.3	19.4	25	5	50	17	16	18.5	9	33.0
P5.10.1/2	10	R1/2	16.3	15	31.3	19.4	25	5	50	21	16	18.5	9	52.7
P5.12.1/4	12	R1/4	19.7	11	30.5	22.4	32.2	6.5	64.4	17	19.5	22.5	8	41.7
P5.12.3/8	12	R3/8	19.7	12	30	22.4	32.2	5	64.4	17	19.5	22.5	9.5	43.7
P5.12.1/2	12	R1/2	19.7	15	33	22.4	32.2	5	64.4	21	19.5	22.5	9.5	63.4

561, rue Édouard, Granby (QC) J2G 3Z5 TÉL.: 1 800 665-3565  
[www.mscorpion.com](http://www.mscorpion.com) | [www.scorpionmfg.com](http://www.scorpionmfg.com)

## Raccords en polymère série P pour tuyau métrique Polymer Fittings "P" series for metric tube

# P

Raccords /  
Fittings

Filets métriques (R) / Metric thread (R)

### PC5 «T» filet mâle compensé «T» offset male thread



Modèle / Model	ØD	R	ØP	A	B	C	E	F	H	X	Y	Orifice (ømm)	Poids/weight (g)
PC5.04.M5	4	M5	9	4	14.6	14.5	17.1	4.4	9	8.6	10.8	2	62
PC5.04.1/8	4	R1/8	9	8	17.8	14.5	17.1	5	10	8.6	10.8	3.2	9.5
PC5.04.1/4	4	R1/4	9	11	20.8	14.5	17.1	5	14	8.6	10.8	3.2	18.6
PC5.06.M5	6	M5	11.2	4	15.7	15.5	19	4.4	9	11	13	2	7.9
PC5.06.1/8	6	R1/8	11.2	8	18.9	15.5	19	5	10	11	13	4	11.2
PC5.06.1/4	6	R1/4	11.2	11	21.9	15.5	19	5	14	11	13	4	20.4
PC5.06.3/8	6	R3/8	11.2	12	22.9	15.5	19	5	17	11	13	4	29.7
PC5.08.1/8	8	R1/8	13.6	8	20.3	17.8	23.6	5	10	13	15	5.5	14.7
PC5.08.1/4	8	R1/4	13.6	11	22.8	17.8	23.6	4.5	14	13	15	5.5	23.4
PC5.08.3/8	8	R3/8	13.6	12	23.8	17.8	23.6	4.5	17	13	15	5.5	32.7
PC5.08.1/2	8	R1/2	13.6	15	27.8	17.8	23.6	5.5	21	13	15	5.5	55.0
PC5.10.1/8	10	R1/8	16.3	8	23.6	19.4	25	6.5	17	16	18.5	6	26.1
PC5.10.1/4	10	R1/4	16.3	11	26.6	19.4	25	6.5	17	16	18.5	8	30.9
PC5.10.3/8	10	R3/8	16.3	12	26.1	19.4	25	5	17	16	18.5	9	32.9
PC5.10.1/2	10	R1/2	16.3	15	29.1	19.4	25	5	21	16	18.5	9	52.5



# SCORPION

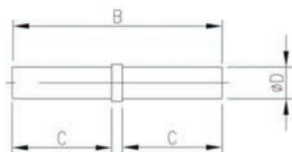
Raccords /  
Fittings

**P**

Raccords en polymère série P pour tuyau métrique  
*Polymer Fittings "P" series for metric tube*

**P7**

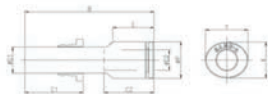
Union mâle  
Male union



Modèle / Model	ØD	B	C	Orifice (ømm)	Poids/weight (g)
P7.04	4	37.5	17.75	2	0.5
P7.06	6	39.5	18.75	4	0.9
P7.08	8	43.2	20.6	5	1.7
P7.10	10	47	22.5	6.5	3
P7.12	12	52.8	25.4	8	4.4

**P8**

Réducteur  
Reducer



Modèle / Model	ØD1	ØD2	ØP	B	C1	C2	E	X	Y	Orifice (ømm)	Poids/weight (g)
P8.06.04	6	4	9	36.1	15.5	14.5	11.3	8.6	11	3.2	1.8
P8.08.04	8	4	9	36.9	17.8	14.5	11.3	8.6	11	3.2	2.1
P8.08.06	8	6	11.2	39.5	17.8	15.5	12.6	11	13	5	2.9
P8.10.06	10	6	11.2	40.3	19.4	15.5	12.6	11	13	5	3.2
P8.10.08	10	8	13.6	45.6	19.4	17.8	16.6	13	15	7	4.6
P8.12.06	12	6	11.2	45	22.4	15.5	16.3	11	13	5	4.3
P8.12.08	12	8	13.6	46.6	22.4	17.8	16.6	13	15	7	5.4
P8.12.10	12	10	16.3	46.6	22.4	19.4	15	16	19	9	6.7

561, rue Édouard, Granby (QC) J2G 3Z5 TÉL.: 1 800 665-3565  
www.mscorpion.com | www.scorpionmfg.com

## Raccords en polymère série P pour tuyau métrique Polymer Fittings "P" series for metric tube

P

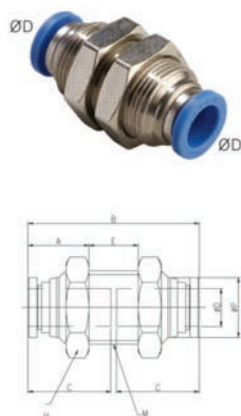
Raccords /  
Fittings

### P9 Raccord Fitting plug



Modèle / Model	ØD	B	ØP	C	Poids/ weight (g)
P9.04	4	30	2	19	0.4
P9.06	6	34	3	20	0.7
P9.08	8	38	4	22	1.4
P9.10	10	41	5	25	2
P9.12	12	43	7	27	3.6
P9.16	16	47	9	31	4

### P10 Passe-cloison Bulkhead

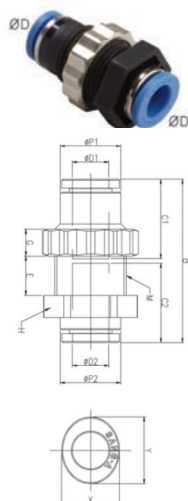


Modèle / Model	ØD	ØP	M	A	H	B	C	E	Orifice (ømm)	Poids/ weight (g)
P10.04	4	8.8	M12 X 1.0P	10.7	14	30	14.5	8.6	3.2	18.6
P10.06	6	11	M14 X 1.0P	11.3	17	31.9	15.5	9.4	5	25.5
P10.08	8	13	M16 X 1.0P	13.2	19	37	17.8	10.6	7	35.5
P10.10	10	15.5	M20 X 1.0P	13.6	24	40.1	19.4	12.9	9	60.7
P10.12	12	18.8	M22 X 1.0P	15.3	26	45.8	22.4	15.4	10	78.3

## Raccords en polymère série P pour tuyau métrique Polymer Fittings "P" series for metric tube

Filets métriques (R) / Metric thread (R)

### P10P Union passe-cloison «P» Bulkhead union "P"



Modèle / Model	ØD1	ØD2	ØP1	ØP2	M	G	H	B	C1	C2	E	Orifice (ømm)	Poids/weight (g)
P10P.04	4	4	9	9	M12 X 1.5P	5	14	30	14.5	14.5	7.1	3.2	6.2
P10P.06	6	6	11.2	11.2	M14 X 1.5P	5	17	31.9	15.5	15.5	8.6	5	9.3
P10P.08	8	8	13.6	13.6	M16 X 1.5P	6	19	36.6	17.8	17.8	8.8	7	13.2
P10P.10	10	10	16.3	16.3	M20 X 2.0P	6	24	40	19.4	19.4	10.2	9	22.1
P10P.12	12	12	19.7	19.7	M24 X 2.0P	6	27	46	22.4	22.4	11.9	10	28.2

### P11 Passe-cloison filet femelle (R) Bulkhead female thread (R)



Modèle / Model	ØD	Rc	ØP	M	G	A	B	C	E	H1	H2	Orifice (ømm)	Poids/weight (g)
P11.04.1/8	4	R1/8	8.8	M12 X 1.0P	11	9	25.1	14.5	3.4	14	14	3.2	18.3
P11.04.1/4	4	R1/4	8.8	M12 X 1.0P	14	12	28.1	14.5	3.4	17	14	3.2	26.0
P11.06.1/8	6	R1/8	11	M14 X 1.0P	9	9	26.3	15.5	6	17	17	5	26.6
P11.06.1/4	6	R1/4	11	M14 X 1.0P	14	12	31.3	15.5	6	17	17	5	31.4
P11.08.1/8	8	R1/8	13	M16 X 1.0P	8	9	28.9	17.8	7.7	19	19	7	39.9
P11.08.1/4	8	R1/4	13	M16 X 1.0P	14	12	34.9	17.8	7.7	19	19	7	44.8
P11.08.3/8	8	R3/8	13	M16 X 1.0P	15	13	35.9	17.8	7.7	19	19	7	41.8
P11.08.1/2	8	R1/2	13	M16 X 1.0P	18	16	38.9	17.8	7.7	24	19	7	59.7
P11.10.1/4	10	R1/4	15.5	M20 X 1.0P	13	12	32.3	19.4	5.7	22	24	9	59.7
P11.10.3/8	10	R3/8	15.5	M20 X 1.0P	15	13	34.3	19.4	5.7	22	24	9	58.3
P11.12.3/8	12	R3/8	18.8	M22 X 1.0P	14	13	37.4	22.4	8.2	24	26	10	76.1
P11.12.1/2	12	R1/2	18.8	M22 X 1.0P	18	16	41.4	22.4	8.2	24	26	10	74.1

## Raccords en polymère série P pour tuyau métrique Polymer Fittings "P" series for metric tube

# P

Raccords /  
Fittings

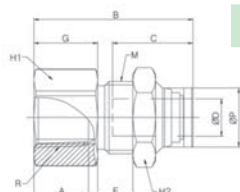
Filets métriques (G) / Metric thread (G)

Filets métriques (R) / Metric thread (R)

### P11G Passe-cloison filet femelle droit Bulkhead female straight thread

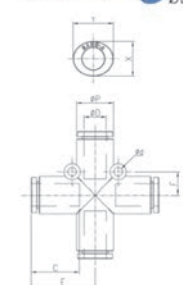


Rc



Modèle / Model	ØD	Rc	ØP	M	G	A	B	C	E	H1	H2	Orifice (ømm)	Poids/weight (g)
P11G.06.1/8	6	G1/8	11	M14 X 1.0P	9	9	26.3	15.5	6	17	17	5	26.6
P11G.06.1/4	6	G1/4	11	M14 X 1.0P	14	12	31.3	15.5	6	17	17	5	31.4
P11G.08.1/8	8	G1/8	13	M16 X 1.0P	8	9	28.9	17.8	7.7	19	19	7	39.9
P11G.08.1/4	8	G1/4	13	M16 X 1.0P	14	12	34.9	17.8	7.7	19	19	7	44.8

### P14 Croix Cross



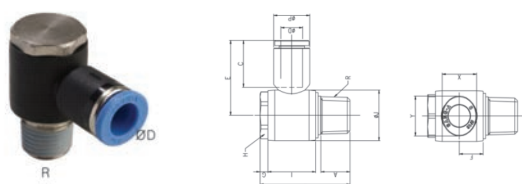
Modèle / Model	ØD	ØP	C	E	F	Ød	X	Y	Orifice (ømm)	Poids/weight (g)
P14.04	4	9	14.5	17.1	6	3.2	8.6	10.8	3.2	5.9
P14.06	6	11.2	15.5	19	6.5	3.2	11	13	5	8.9
P14.08	8	13.6	17.8	23.6	8.5	3.2	13	15	7	14.8v
P14.10	10	16.3	19.4	25	10	4.2	16	18.5	9	21.1
P14.12	12	19.7	22.4	32.2	12	4.2	19.5	22.5	10	38.8

561, rue Édouard, Granby (QC) J2G 3Z5 TÉL.: 1 800 665-3565  
www.mscorpion.com | www.scorpionmfg.com

## Raccords en polymère série P pour tuyau métrique Polymer Fittings "P" series for metric tube

Filets métriques (R) / Metric thread (R)

### P15 Coude compact Compact elbow



Modèle / Model	ØD	R	ØP	A	B	C	E	F	G	H	I	ØJ	X	Y	Orifice (ømm)	Poids/ weight (g)
P15.04.M5	4	M5	9	3.5	17.8	14.5	19.5	6.6	2.5	8	11.8	10	8.6	10.8	2	5.9
P15.04.1/8	4	R1/8	9	8	26.5	14.5	21.5	7.3	2.5	13	14.5	14	8.6	10.8	3.2	16.1
P15.04.1/4	4	R1/4	9	11	34	14.5	24	9	3	17	18	19	8.6	10.8	3.2	31.4
P15.06.M5	6	M5	11.2	3.5	17.8	15.5	20.5	7.1	2.5	8	11.8	10	8.6	10.8	2	6.7
P15.06.1/8	6	R1/8	11.2	8	26.5	15.5	22.5	7.3	2.5	13	14.5	14	11	13	5	16.9
P15.06.1/4	6	R1/4	11.2	11	34	15.5	25	9	3	17	18	19	11	13	5	32.2
P15.06.3/8	6	R3/8	11.2	12	39.8	15.5	26.7	10.5	4	21	21	22.4	11	13	5	53.3
P15.08.1/8	8	R1/8	13.6	8	26.5	17.8	25.6	8	2.5	13	14.5	14	13	15	6	18.1
P15.08.1/4	8	R1/4	13.6	11	34	17.8	28.1	9	3	17	18	19	13	15	7	33.5
P15.08.3/8	8	R3/8	13.6	12	39.8	17.8	29.8	10.5	4	21	21	22.4	13	15	7	53.8
P15.08.1/2	8	R1/2	13.6	15	44.8	17.8	32.1	11	5	24	22	27	13	15	7	89.2
P15.10.1/4	10	R1/4	16.3	11	34	19.4	28.9	9.7	3	17	18	19	16	18.5	8	36.7
P15.10.3/8	10	R3/8	16.3	12	39.8	19.4	30.6	10.5	4	21	21	22.4	16	18.5	9	56.0
P15.10.1/2	10	R1/2	16.3	15	44.8	19.4	32.9	11	5	24	22	27	16	18.5	9	90.4
P15.12.3/8	12	R3/8	19.7	12	39.8	22.4	35.9	11.9	4	21	21	22.4	19.5	22.5	9.2	60.2
P15.12.1/2	12	R1/2	19.7	15	44.8	22.4	38.2	11.9	5	24	22	27	19.5	22.5	9.5	94.6

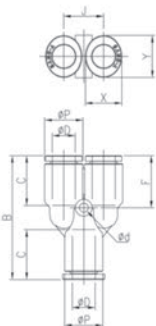
## Raccords en polymère série P pour tuyau métrique Polymer Fittings "P" series for metric tube

# P

Raccords /  
Fittings

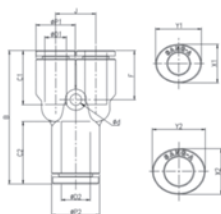
Filets métriques (R) / Metric thread (R)

### P23 «Y» tube



Modèle / Model	ØD	ØP	B	C	F	J	Ød	X	Yv	Orifice (ømm)	Poids/weight (g)
P23.04	4	9	31.2	14.5	13.2	9.3	3.2	8.6	10.8	2.1	4.9
P23.06	6	11.2	34.7	15.5	14.1	11.4	3.2	11	13	3.6	7.3
P23.08	8	13.6	44.2	17.8	18.6	14.2	3.2	13	15	5.4	13.9
P23.10	10	16.3	46	19.4	18	17	4.2	16	18.5	6.4	17.7
P23.12	12	19.7	56.8	22.4	23.9	20	4.2	19.5	22.5	7.3	32.5

### P23 «Y» tube 2 diameter



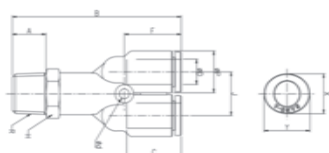
Modèle / Model	ØD1	ØD2	ØP1	ØP2	B	C1	C2	Ød	F	J	X1	Y1	X2	Y2	Orifice (ømm)	Poids/weight (g)
P5D.06.04	6	4	9	11.2	32.5	14.5	15.5	3.2	13.2	9.3	8.6	10.8	11	13	2.6	5.1
P5D.08.06	8	6	11.2	13.6	38.5	15.5	17.8	3.2	14.1	11.4	11	13	13	15	4.1	8.2
P5D.10.08	10	8	13.6	16.3	43.2	17.8	19.4	3.2	17.8	14.2	13	15	16	18.5	6.4	12.6
P5D.12.10	12	10	16.3	19.7	50.9	19.4	22.4	4.2	18	17	16	18.5	19.5	22.5	7.0	20.4

561, rue Édouard, Granby (QC) J2G 3Z5 TÉL.: 1 800 665-3565  
[www.mscorpion.com](http://www.mscorpion.com) | [www.scorpionmfg.com](http://www.scorpionmfg.com)

## Raccords en polymère série P pour tuyau métrique Polymer Fittings "P" series for metric tube

Filets métriques (R) / Metric thread (R)

**P24** «Y» filet mâle  
"Y" male thread



Modèle / Model	ØD	R	ØP	A	B	C	Ød	J	F	H	X	Y	Orifice (ømm)	Poids/ weight (g)
P24.04.M5	4	M5	9	4	37.4	14.5	3.2	9.3	13.2	9	8.6	10.8	2	8.9
P24.04.1/8	4	R1/8	9	8	40.6	14.5	3.2	9.3	13.2	10	8.6	10.8	2.1	11.6v
P24.04.1/4	4	R1/4	9	11	43.6	14.5	3.2	9.3	13.2	14	8.6	10.8	2.1	20.5
P24.06.M5	6	M5	11.2	4	40.5	15.5	3.2	11.4	14.1	11	11	13	2	12.9
P24.06.1/8	6	R1/8	11.2	8	43.7	15.5	3.2	11.4	14.1	11	11	13	3.6	15.2
P24.06.1/4	6	R1/4	11.2	11	46.7	15.5	3.2	11.4	14.1	14	11	13	3.6	23.1
P24.06.3/8	6	R3/8	11.2	12	47.7	15.5	3.2	11.4	14.1	17	11	13	3.6	36.2
P24.08.1/8	8	R1/8	13.6	8	52.6	17.8	3.2	14.2	18.6	13	13	15	5.4	23.2
P24.08.1/4	8	R1/4	13.6	11	55.1	17.8	3.2	14.2	18.6	14	13	15	5.4	27.9
P24.08.3/8	8	R3/8	13.6	12	56.1	17.8	3.2	14.2	18.6	17	13	15	5.4	36.2
P24.08.1/2	8	R1/2	13.6	15	60.1	17.8	3.2	14.2	18.6	21	13	15	5.4	57.2
P24.10.1/8	10	R1/8	16.3	8	53	19.4	4.2	17	18	17	16	18.5	6	30.6
P24.10.1/4	10	R1/4	16.3	11	56	19.4	4.2	17	18	17	16	18.5	6.4	35.2
P24.10.3/8	10	R3/8	16.3	12	58	19.4	4.2	17	18	17	16	18.5	6.4	40.8
P24.10.1/2	10	R1/2	16.3	15	61	19.4	4.2	17	18	21	16	18.5	6.4	59.8
P24.12.1/4	12	R1/4	19.7	11	65.9	22.4	4.2	20	23.9	19	19.5	22.5	7.3	53.7
P24.12.3/8	12	R3/8	19.7	12	67.9	22.4	4.2	20	23.9	19	19.5	22.5	7.3	59.5
P24.12.1/2	12	R1/2	19.7	15	70.9	22.4	4.2	20	23.9	21	19.5	22.5	7.3	74.9

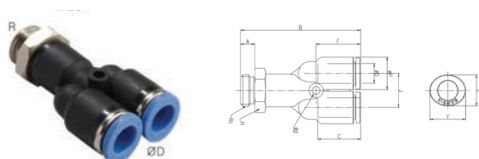
## Raccords en polymère série P pour tuyau métrique Polymer Fittings "P" series for metric tube

# P

Raccords /  
Fittings

Filets métriques (R) / Metric thread (R)

## P24G «Y» filet mâle avec o-ring «Y» male thread with o-ring



Modèle / Model	ØD	R	ØP	A	B	C	Ød	J	F	H	X	Y	Orifice (ømm)	Poids/ weight (g)
P24G.06.1/4	6	G1/4	11.2	6	41.2	15.5	3.2	11.4	14.1	16	11	13	3.6	19.0
P24G.08.1/4	8	G1/4	13.6	6	50.1	17.8	3.2	14.2	18.6	16	13	15	5.4	24.9
P24G.08.3/8	8	G3/8	13.6	7	51.1	17.8	3.2	14.2	18.6	20	13	15	5.4	31.4
P24G.10.1/4	10	G1/4	16.3	6	54.5	19.4	4.2	17	18	17	16	18.5	6.4	35.6
P24G.10.3/8	10	G3/8	16.3	7	53	19.4	4.2	17	18	20	16	18.5	6.4	36.4

## P25 Distributeur Distributor



Modèle / Model	ØD1	ØD2	ØP1	ØP2	B	C1	C2	Ød	F1	F2	J	X1	Y1	X2	Y2	Orifice (ømm)	Poids/ weight (g)
P25.06.04	6	4	11.2	9	54.7	15.5	14.5	3.2	6.5	30.6	9.3	11	13	8.6	10.8	3.2	7.9
P25.08.04	8	4	13.6	9	59.4	17.8	14.5	3.2	8.5	31.6	9.3	13	15	8.6	10.8	3.2	10.3
P25.08.06	8	6	13.6	11.2	66	17.8	15.5	3.2	8.5	38.8	11.4	13	15	11	13	5	13.0
P25.10.06	10	6	16.3	11.2	68.8	19.4	15.5	4.2	10	38.8	11.4	16	19	11	13	5	15.8
P25.10.08	10	8	16.3	13.6	76.4	19.4	17.8	4.2	10	47.4	14.2	16	19	13	15	7	20.4

561, rue Édouard, Granby (QC) J2G 3Z5 TÉL.: 1 800 665-3565  
[www.mscorpion.com](http://www.mscorpion.com) | [www.scorpionmfg.com](http://www.scorpionmfg.com)

## Raccords en polymère série P pour tuyau métrique Polymer Fittings "P" series for metric tube

Filets métriques (R) / Metric thread (R)

### P26 Coude double compact Double compact elbow



Modèle / Model	ØD	R	ØP	A	B	C	E	F	G	H	I	ØJ	K	X	Orifice (ømm)	Poids/ weight (g)
P26.04.M5	4	M5	9	3.5	17.8	14.5	18.6	6.6	2.5	8	11.8	10	9.3	8.6	2	7.4
P26.06.1/8	6	R1/8	11.2	8	26.5	15.5	22	7.3	2.5	13	14.5	14	11.4	11	5	19.2
P26.08.1/4	8	R1/4	13.6	11	34	17.8	28.1	9	3	17	18	19	14.2	13	6.8	37.1
P26.10.3/8	10	R3/8	16.3	12	39.8	19.4	29.6	10.5	4	21	21	22.4	17	16	9	61.3
P26.12.1/2	12	R1/2	19.7	15	44.8	22.4	34.9	11.9	5	24	22	27	20	19.5	10	103.7

### P28 «Y» connecteur Plug-in "Y"



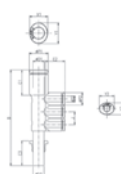
Modèle / Model	ØD1	ØD2	ØP	B	C1	C2	F	J	X	Y	Orifice (ømm)	Poids/ weight (g)
P28.06.04	6	4	9	42.8	14.5	14.5	16	9.3	8.6	10.8	2	3.7
P28.08.06	8	6	11.2	45.5	15.5	15.5	17.2	11.4	11	13	3.5	5.8
P28.10.08	10	8	13.6	53.1	17.8	17.8	22	14.2	13	15	4.4	9.3
P28.12.10	12	10	16.3	58	19.4	19.4	22.6	17	16	18.5	5.6	14.4

## Raccords en polymère série P pour tuyau métrique Polymer Fittings "P" series for metric tube

# P

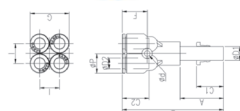
Raccords /  
Fittings

### P29 Raccord distributeur avec connecteur Distributor fitting with plug



Modèle / Model	ØD1	ØD2	ØD3	ØP1	ØP2	B	C1	C2	C3	J	X1	Y1	X2	Y2	Orifice (ømm)	Poids/ weight (g)
P29.06.04	6	4	6	11.2	9	64.2	15.5	14.5	15.5	9.3	11	13	8.6	10.8	3.2	7.7
P29.08.04	8	4	8	13.6	9	68.5	17.8	14.5	17.8	9.3	13	15	8.6	10.8	3.2	9.6
P29.08.06	8	6	8	13.6	11.2	75	17.8	15.5	17.8	11.4	13	15	11	13	5	12.2
P29.10.08	10	8	10	16.3	13.6	86.2	19.4	17.8	19.4	14.2	16	18.5	13	15	7	19.4

### P30 «Y» double réducteur Double reducer "Y"



Modèle / Model	ØD1	ØD2	ØP	A	B	C1	C2	F	G	I	Ød	Orifice (ømm)	Poids/ weight (g)
P30.06.04	6	4	9	23	53	15.5	14.5	13.1	18.2	9.2	3.2	2.3	8.2
P30.08.06	8	6	11.2	25	58.5	17.8	15.5	14.5	22.6	11.5	3.2	3.7	13.2

### P30D Union «Y» double réducteur Double reducer «Y» union



Modèle / Model	ØD1	ØD2	ØP1	ØP2	B	C1	C2	E	F	G	Ød	X1	Y1	X2	Y2	Ød	Orifice (ømm)	Poids/ weight (g)
P30D.06.04	6	4	11.2	9	32.5	15.5	14.5	18.2	13.1	9.2	3.2	11	13	8.6	8.6	2.3	7.8	25
P30D.08.06	8	6	13.6	11.2	36.6	17.8	15.5	22.6	14.5	11.5	3.2	13	15	11	11	3.7	14.0	25

561, rue Édouard, Granby (QC) J2G 3Z5 TÉL.: 1 800 665-3565  
www.mscorpion.com | www.scorpionmfg.com

## Raccords en polymère série P pour tuyau métrique Polymer Fittings "P" series for metric tube

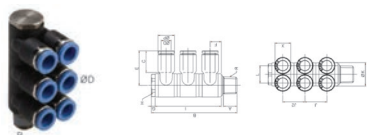
Filets métriques (R) / Metric thread (R)

### P31 «Y» filet mâle double Male thread double "Y"



Modèle / Model	ØD	R	ØP	A	B	C	E	F	G	H	I	Ød	Orifice (ømm)	Poids/weight (g)
P31.04.1/8	4	R1/8	9	8	41.5	14.5	13	13.1	18.2	11	9.2	3.2	2.3	14.2
P31.04.1/4	4	R1/4	9	11	44.5	14.5	16	13.1	18.2	14	9.2	3.2	2.3	22.3
P31.06.1/8	6	R1/8	11.2	8	45	15.5	13	14.5	22.6	13	11.5	3.2	3.7	20.4
P31.06.1/4	6	R1/4	11.2	11	47.5	15.5	15.5	14.5	22.6	14	11.5	3.2	3.7	27.6

### P34 Coude distributeur avec 6 sorties 6 exits elbow distributor



Modèle / Model	ØD	R	ØP	A	B	C	E	F	G	H	I	J	J2	ØK	L	X	Orifice (ømm)	Poids/weight (g)
P34.04.1/8	4	R1/8	9	8	55.5	14.5	20.6	7.3	2.5	13	43.5	14.5	14.5	14	9.3	8.6	3.2	37.7
P34.06.1/8	6	R1/8	11.2	8	55.5	15.5	22	7.3	2.5	13	43.5	14.5	14.5	14	11.4	11	5	42.8
P34.06.1/4	6	R1/4	11.2	11	70	15.5	23.5	9	3	17	54	18	18	19	11.4	11	5	70.2
P34.08.1/8	8	R1/8	13.6	8	55.5	17.8	25.6	8	2.5	13	43.5	14.5	14.5	14	14.2	13	5.2	51.0
P34.08.1/4	8	R1/4	13.6	11	70	17.8	28.1	9	3	17	54	18	18	19	14.2	13	6.8	78.5
P34.08.3/8	8	R3/8	13.6	12	81.8	17.8	29.8	10.5	4	21	63	21	21	22.4	14.2	13	7	112.3
P34.10.1/4	10	R1/4	16.3	11	70	19.4	27.5	9.7	3	17	54	18	18	19	17	16	7.3	82.3
P34.10.3/8	10	R3/8	16.3	12	81.8	19.4	29.6	10.5	4	21	63	21	21	22.4	17	16	9	134.6
P34.12.3/8	12	R3/8	19.7	12	81.8	22.4	32.4	11.9	4	21	63	21	21	22.4	20	19.5	8.7	149.0
P34.12.1/2	12	R1/2	19.7	15	88.8	22.4	34.9	11.9	5	24	66	22	22	27	20	19.5	10	204.8

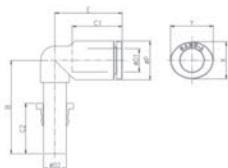
561, rue Édouard, Granby (QC) J2G 3Z5 TÉL.: 1 800 665-3565  
[www.mscorpion.com](http://www.mscorpion.com) | [www.scorpionmfg.com](http://www.scorpionmfg.com)

## Raccords en polymère série P pour tuyau métrique Polymer Fittings "P" series for metric tube

P

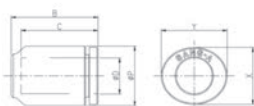
Raccords /  
Fittings

### P35 Coude connecteur Plug-in elbow



Modèle / Model	ØD1	ØD2	ØP	B	C1	C2	E	X	Y	Orifice (ømm)	Poids/weight (g)
P35.04	4	4	9	23.5	14.5	14.5	17.1	8.6	10.8	2.5	1.8
P35.06	6	6	11.2	29.6	15.5	15.5	18	8.6	13	4	3.0
P35.06.04	6	4	9	28.5	15.5	14.5	17.1	8.6	10.8	3.2	2.1
P35.08	8	8	13.6	32.8	17.8	17.8	23.6	13	15	6	4.9
P35.10	10	10	16.3	36.2	19.4	19.4	25	16	18.5	8	7.3
P35.12	12	12	19.7	39.9	22.4	22.4	32.2	19.5	22.5	9	13.5

### P36 Bouchon Cap

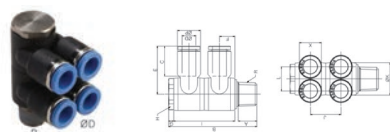


Modèle / Model	ØD	ØP	B	C	X	Y	Poids/weight (g)
P36.04	4	9	15.6	14.5	8.6	10.8	1.4
P36.06	6	11.2	17	15.5	11	13	2.2
P36.08	8	13.6	19.8	17.8	13	15	3.6
P36.10	10	16.3	21	19.4	16	18.5	5.1
P36.12	12	19.7	25.4	22.4	19.5	22.5	9.3

## Raccords en polymère série P pour tuyau métrique *Polymer Fittings "P" series for metric tube*

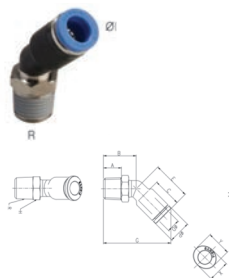
Filets métriques (R) / Metric thread (R)

### P38 Coude distributeur avec 4 sorties 4 exits elbow distributor



Modèle / Model	ØD	R	ØP	A	B	C	E	F	G	H	I	J	ØK	L	X	Orifice (ømm)	Poids/ weight (g)
P38.06.1/4	6	R1/4	11.2	11	52	15.5	23.5	9	3	17	36	18	19	11.4	11	5	52.7
P38.06.1/8	6	R1/8	11.2	8	41	15.5	22	7.3	2.5	13	29	14.5	14	11.4	11	5	30.9

### P45 45 degrés 45 deg.



Modèle / Model	ØD	R	ØP	A	B	C	E	H	G	X	Y	Orifice (ømm)	Poids/ weight (g)
P45.06.1/4	6	R1/4	11.2	11	19.9	15.5	18	14	36.3	11	13	4	16.3
P45.08.1/4	8	R1/4	13.6	11	20	17.8	23.6	14	41.1	13	15	5.5	16.7
P45.10.1/4	10	R1/4	16.3	11	22.6	19.4	25	17	45.7	16	18.5	8	25.4

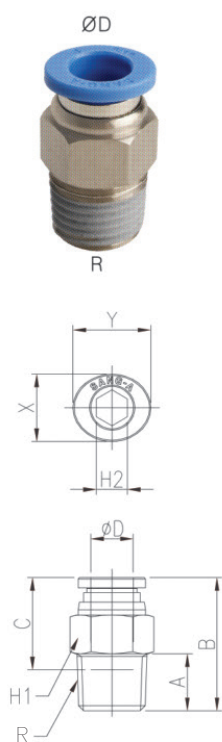
## Raccords en polymère série P pour tuyau impérial Polymer Fittings "P" series for imperial tube

**P**  
Raccords /  
Fittings

Filets impérial (NTP) / Imperial thread (NTP)

### P1

Adapteur droit mâle  
Straight male adapter



Modèle / Model	ØD	R	A	B	C	H1 (mm)	H2	X	Y	Orifice (ømm)	Poids/ weight (g)
P1.3/16.10-32	3/16	UNFC10*32	4	23.8	17	7/16	2.38	11	13	2	9
P1.3/16.1/8	3/16	NPT1/8	8	23.3	17	7/16	3.97	11	13	4	9.3
P1.3/16.1/4	3/16	NPT1/4	11	23.3	17	9/16	3.97	11	13	4	16.5
P1.5/32.10-32	5/32	UNFC10*32	/	/	/	/	/	/	/	/	/
P1.5/32.1/8	5/32	NPT1/8	/	/	/	/	/	/	/	/	/
P1.5/32.1/4	5/32	NPT1/4	/	/	/	/	/	/	/	/	/
P1.1/4.10-32	1/4	UNF10*32	4	25	17	1/2	2.38	12	14	2	11.8
P1.1/4.1/8	1/4	NPT1/8	8	23.5	17	1/2	3.97	12	14	4	10.3
P1.1/4.1/8M	1/4	R1/8	/	/	/	/	/	/	/	/	/
P1.1/4.1/4	1/4	NPT1/4	11	25.5	17	9/16	3.97	12	14	4	17.5
P1.1/4.1/4M	1/4	R1/4	/	/	/	/	/	/	/	/	/
P1.1/4.3/8	1/4	NPT3/8	12	25	17	11/16	3.97	12	14	4	24.1
P1.1/4.1/2	1/4	NPT1/2	15	25	17	11/16	3.97	12	14	4	47.8
P1.5/16.1/8	5/16	NPT1/8	8	28.9	18.5	9/16	4.76	14	16	4	16.4
P1.5/16.1/4	5/16	NPT1/4	11	27.4	18.5	9/16	5.56	14	16	6	18.1
P1.5/16.3/8	5/16	NPT3/8	12	25.7	18.5	11/16	5.56	14	16	6	25.8
P1.5/16.1/2	5/16	NPT1/2	15	28.7	18.5	7/8	5.56	14	16	6	49.6
P1.3/8.1/8	3/8	NPT1/8	8	31.5	21	11/16	4.76	17	19	4	25.6
P1.3/8.1/8M	3/8	R1/8	/	/	/	/	/	/	/	/	/
P1.3/8.1/4	3/8	NPT1/4	11	34.5	21	11/16	5.56	17	19	6	29.6
P1.3/8.1/4M	3/8	R1/4	/	/	/	/	/	/	/	/	/
P1.3/8.3/8	3/8	NPT3/8	12	30.5	21	11/16	7.94	17	19	8	27.7
P1.3/8.1/2	3/8	NPT1/2	15	30	21	7/8	7.94	17	19	8	48.8
P1.1/2.1/8	1/2	NPT1/8	8	33.9	22.5	7/8	3.97	21	23	4	37.9
P1.1/2.1/4	1/2	NPT1/4	11	27.4	22.5	7/8	6.35	21	23	6	41.7

561, rue Édouard, Granby (QC) J2G 3Z5 TÉL.: 1 800 665-3565  
www.mscorpion.com | www.scorpionmfg.com

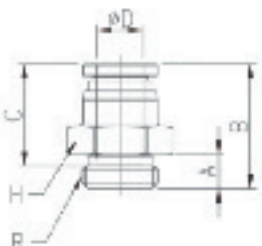
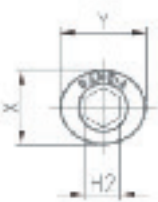
## Raccords en polymère série P pour tuyau impérial *Polymer Fittings "P" series for imperial tube*

Filets impérial (NTP) / Imperial thread (NTP)

Filets impérial (G) / Imperial tube thread (G)

# P1G

### Adapteur droit mâle avec o-ring Straight male adapter with o-ring



Modèle / Model	ØD	R	A	B	C	H1 (mm)	H2	X	Y	Orifice (ømm)	Poids/ weight (g)
P1G.1/4.1/8	1/4	G1/8	/	/	/	/	/	/	/	/	/
P1G.1/4.1/4	1/4	G1/4	/	/	/	/	/	/	/	/	/
P1G.3/8.1/4	3/8	G1/4	/	/	/	/	/	/	/	/	/
P1G.3/8.3/8	3/8	G3/8	/	/	/	/	/	/	/	/	/

## Raccords en polymère série P pour tuyau impérial Polymer Fittings "P" series for imperial tube

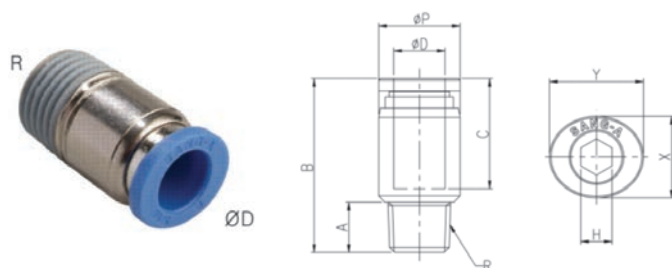
# P

Raccords /  
Fittings

Filets impérial (NTP) / Imperial thread (NTP)

# P1R

Adapteur rond droit mâle  
Round straight male adapter



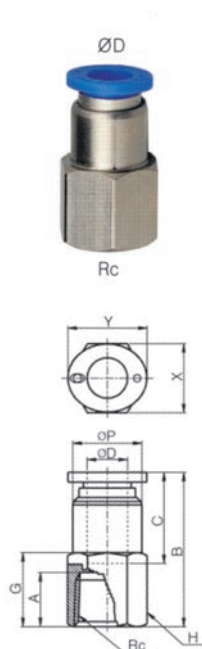
Modèle / Model	ØD	R	ØP	A	B	C	H	X	Y	Orifice (ømm)	Poids/weight (g)
P1R.5/32.10-32	5/32	UNF10*32	10	5.5	21.6	16	3/32	10	12	2	6.1
P1R.1/4.10-32	1/4	UNF10*32	12	5.5	24.7	17	3/32	12	14	2	9
P1R.1/4.1/8	1/4	NPT1/8	12	8	23.2	17	5/32	12	14	4	8.5
P1R.1/4.1/4	1/4	NPT1/4	14	11	25.2	17	5/32	12	14	4	16.4
P1R.5/16.1/8	5/16	NPT1/8	14	8	28.5	18.5	3/16	14	16	5	14
P1R.5/16.1/4	5/16	NPT1/4	14	11	27	18.5	7/32	14	16	6	14.2
P1R.5/16.3/8	5/16	NPT3/8	18	12	25.3	18.5	7/32	14	16	6	22.7
P1R.3/8.1/8	3/8	NPT1/8	17	8	31	21	7/32	17	19	4	20.5
P1R.3/8.1/4	3/8	NPT1/4	17	11	33.9	21	7/32	17	19	6	25.5
P1R.3/8.3/8	3/8	NPT3/8	18	12	29.9	21	16	17	19	8	26.7
P1R.3/8.1/2	3/8	NPT1/2	22	15	29.4	21	5/16	17	19	8	44
P1R.1/2.1/4	1/2	NPT1/4	21	11	35.5	22.5	1/4	21	23	6	30.3
P1R.1/2.3/8	1/2	NPT3/8	21	12	31.1	22.5	5/16	21	23	8	35.4
P1R.1/2.1/2	1/2	NPT1/2	22	15	33.1	22.5	16	21	23	8	50.3

## Raccords en polymère série P pour tuyau impérial Polymer Fittings "P" series for imperial tube

Filets impérial (NTP) / Imperial thread (NTP)

# P2

Droit Femelle  
Straight female



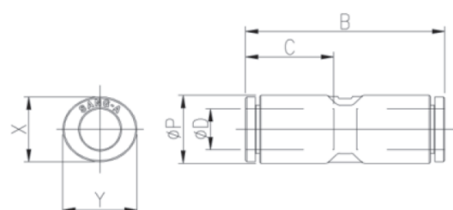
Modèle / Model	ØD	Rc	ØP	G	A	B	C	H	X	Y	Orifice (ømm)	Poids/ weight (g)
P2.5/32.1/8	5/32	NPT1/8	10	11	9	25.6	16	9/16	10	12	3.5	15.3
P2.1/4.1/8	1/4	NPT1/8	12	10	9	26.9	17	9/16	12	14	5	15.9
P2.1/4.1/4	1/4	NPT1/4	12	14	12	29.9	17	11/16	12	14	5	24.5
P2.1/4.3/8	1/4	NPT3/8	12	15	13	31.2	17	7/8	12	14	5	35.3
P2.5/16.1/4	5/16	NPT1/4	14	15	12	31.3	18.5	11/16	14	16	7	27.2
P2.3/8.1/8	3/8	NPT1/8	17	12	9	28.5	21	9/16	17	19	7	25.2
P2.3/8.1/4	3/8	NPT1/4	17	13	12	33.9	21	11/16	17	19	9	30.8
P2.3/8.3/8	3/8	NPT3/8	17	15	13	34.9	21	7/8	17	19	9	45
P2.3/8.1/2	3/8	NPT1/2	17	19	16	39.5	21	7/8	17	19	9	56.7
P2.1/2.1/4	1/2	NPT1/4	20.2	13	12	36.4	22.5	7/8	21	23	10	56.1
P2.1/2.3/8	1/2	NPT3/8	20.2	14	13	37.4	22.5	7/8	21	23	10	57.6
P2.1/2.1/2	1/2	NPT1/2	20.2	19	16	39.5	22.5	7/8	21	23	10	61.8

## Raccords en polymère série P pour tuyau impérial Polymer Fittings "P" series for imperial tube

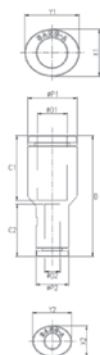
P

Raccords /  
Fittings

### P3 Union Union



Modèle / Model	ØD	ØP	B	C	X	Y	Orifice (ømm)	Poids/ weight (g)
P3.3/16	3/16	11	34.8	17	11	13	3.5	4.8
P3.1/4	1/4	12.4	35.4	17	12	14	5	5.7
P3.3/8	3/8	17.6	43	21.0	17	19	8	14.1
P3.1/2	1/2	21.2	47	22.5	21	23	10	18.2

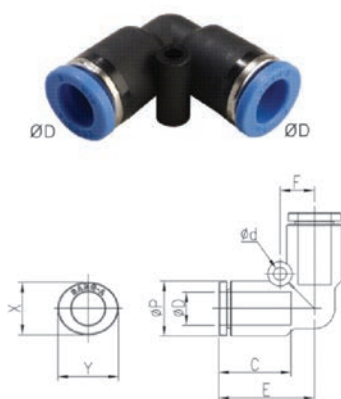


Modèle / Model	ØD1	ØD2	B	C1	ØP1	ØP2	C2	X1	Y1	X2	Y2	Orifice (ømm)	Poids/ weight (g)
P3.3/16.5/32	3/16	5/32	33.5	17	5/32	10.4	16	11	13	10	12	3	21
P3.1/4.5/32	1/4	5/32	35.8	18	5/32	10.4	16	12	14	10	12	3.5	5.2
P3.5/16.1/4	5/16	1/4	38.7	18.5	1/4	12.4	17	14	16	12	14	5	6.8
P3.3/8.1/4	3/8	1/4	43	21	1/4	17.6	19.2	17	19	12	14	5	29.9
P3.3/8.5/16	3/8	5/16	42.5	21	5/16	14.4	18.5	17	19	14	16	7	11.2
P3.1/2.3/8	1/2	3/8	46.5	22.2	3/8	17.6	21	21	23	17	19	8	16.3

561, rue Édouard, Granby (QC) J2G 3Z5 TÉL.: 1 800 665-3565  
[www.mscorpion.com](http://www.mscorpion.com) | [www.scorpionmfg.com](http://www.scorpionmfg.com)

### P4

#### Coude connecteur Elbow connector



Modèle / Model	ØD	ØP	E	C	F	Ød	X	Y	Orifice (ømm)	Poids/ weight (g)
P4.3/16	3/16	11	19.4	17	6.5	2.2	11	13	3.5	4.9
P4.1/4	1/4	12.4	20.6	17	8	3.2	12	14	5	6.2
P4.3/8	3/8	17.6	26.1	21	12	4.2	17	19	8	15.6
P4.1/2	1/2	21.2	29	22.5	14	4.2	21	23	10	20

## Raccords en polymère série P pour tuyau impérial Polymer Fittings "P" series for imperial tube

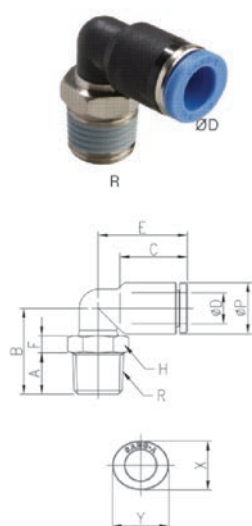
# P

Raccords /  
Fittings

Filets impérial (NTP) / Imperial thread (NTP)

# P4

Coude filet mâle  
Elbow male thread



Modèle / Model	ØD	R	ØP	A	B	C	E	H	X	Y	Orifice (ømm)	Poids/ weight (g)
P4.3/16.1/8	3/16	NPT1/8	11	8	25	17	19.1	7/16	11	13	2.6	11.9
P4.3/16.1/4	3/16	NPT1/4	11	11	28	17	19.1	9/16	11	13	2.6	17.9
P4.5/32.10-32	5/32	UNF10*32	10.4	5.5	22.1	16	18.1	7/16	10	12	2	9.5
P4.5/32.1/8	5/32	NPT1/8	10.4	8	24.6	16	18.1	7/16	10	12	2.6	11.7
P4.5/32.1/4	5/32	NPT1/4	10.4	11	27.6	16	18.1	9/16	10	12	2.6	18
P4.1/4.10-32	1/4	UNF10*32	12.4	5.5	23.1	17	20.6	1/2	12	14	2	11.2
P4.1/4.1/8	1/4	NPT1/8	12.4	8	25.1	17	20.6	1/2	12	14	4.6	13.6
P4.1/4.1/8M	1/4	R1/8	/	/	/	/	/	/	/	/	/	/
P4.1/4.1/4	1/4	NPT1/4	12.4	11	29.1	17	20.6	9/16	12	14	4.6	21.5
P4.1/4.1/4M	1/4	R1/4	/	/	/	/	/	/	/	/	/	/
P4.1/4.3/8	1/4	NPT3/8	12.4	12	31.1	17	20.6	11/16	12	14	4.6	32.9
P4.1/4.1/2	1/4	NPT1/2	12.4	15	35	17	20.6	7/8	12	14	4.6	45
P4.5/16.1/8	5/16	NPT1/8	14.4	8	27	18.5	22.7	9/16	14	16	5	16.3
P4.5/16.1/4	5/16	NPT1/4	14.4	11	31	18.5	22.7	9/16	14	16	6	23.4
P4.5/16.3/8	5/16	NPT3/8	14.4	12	32	18.5	22.7	11/16	14	16	6	31.4
P4.3/8.1/8	3/8	NPT1/8	17.6	8	32	21	26.1	11/16	17	19	5	29.7
P4.3/8.1/4	3/8	NPT1/4	17.6	11	35	21	26.1	11/16	17	19	8	32.4
P4.3/8.1/4M	3/8	R1/4	/	/	/	/	/	/	/	/	/	/
P4.3/8.3/8	3/8	NPT3/8	17.6	12	36	21	26.1	11/16	17	19	8	40
P4.3/8.1/2	3/8	NPT1/2	17.6	15	39	21	26.1	7/8	17	19	8	55.6
P4.1/2.1/8	1/2	NPT1/8	21.2	8	34	22.5	29.3	7/8	21	23	5	
P4.1/2.1/4	1/2	NPT1/4	21.2	11	37	22.5	29.3	7/8	21	23	7	44.5
P4.1/2.3/8	1/2	NPT3/8	21.2	12	38	22.5	29.3	7/8	21	23	9	48.4
P4.1/2.1/2	1/2	NPT1/2	21.2	15	41	22.5	29.3	7/8	21	23	9	60.3

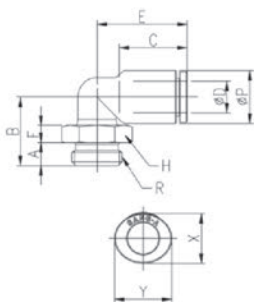
561, rue Édouard, Granby (QC) J2G 3Z5 TÉL.: 1 800 665-3565  
www.mscorpion.com | www.scorpionmfg.com

## Raccords en polymère série P pour tuyau impérial Polymer Fittings "P" series for imperial tube

Filets impérial (NTP) / Imperial thread (NTP)

### P4G

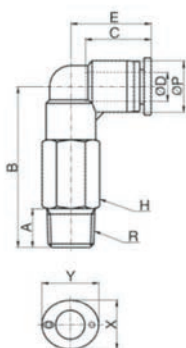
Coude mâle avec o-ring  
Elbow male with o-ring



Modèle / Model	ØD	ØD	ØP	B	C	X	Y	Orifice (ømm)	Poids/weight (g)
P4G.1/4.1/4	1/4	G1/4	/	/	/	/	/	/	/
P4G.3/8.1/4	3/8	G1/4	/	/	/	/	/	/	/
P4G.3/8.3/8	3/8	G3/8	/	/	/	/	/	/	/

### P4L

Coude filet mâle  
Male thread elbow long



Modèle / Model	ØD	R	ØP	A	B	C	E	H	X	Yv	Orifice (ømm)	Poids/weight (g)
P4L.1/4.1/8	1/4	NPT1/8	12.4	8	37.8	17	21.1	12	12	14	4.6	27.6
P4L.1/4.1/4	1/4	NPT1/4	12.4	11	41.8	17	21.1	14	12	14	4.6	35.3
P4L.1/4.3/8	1/4	NPT3/8	12.4	12	44.3	17	21.1	17	12	14	4.6	54
P4L.3/8.1/8	3/8	NPT1/8	17.6	8	50.6	21	26.1	17	17	19	5	57
P4L.3/8.1/4	3/8	NPT1/4	17.6	11	53.6	21	26.1	17	17	19	8	65.7
P4L.3/8.3/8	3/8	NPT3/8	17.6	12	55.1	21	26.1	17	17	19	8	74.7
P4L.3/8.1/2	3/8	NPT1/2	17.6	15	58.6	21	26.1	21	17	19	8	106.7
P4L.1/2.1/4	1/2	NPT1/4	21	11	59	22.5	24.3	21	21	23	8	109.2
P4L.1/2.3/8	1/2	NPT3/8	21	12	60.5	22.5	24.3	21	21	23	9	114.3
P4L.1/2.1/2	1/2	NPT1/2	21	15	64	22.5	24.3	21	21	23	9	120.2

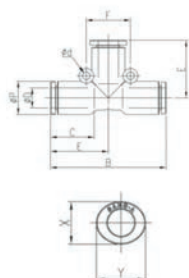
## Raccords en polymère série P pour tuyau impérial Polymer Fittings "P" series for imperial tube

P

Raccords /  
Fittings

# P5

«T»



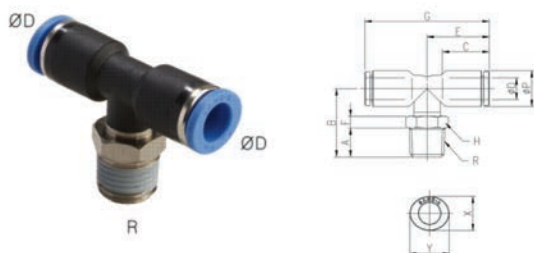
Modèle / Model	ØD	ØP	E	C	F	Ød	X	Y	Orifice (ømm)	Poids/weight (g)
P5.3/16	3/16	11	19.4	17	6.5	2.2	11	13	3.5	7.3
P5.1/4	1/4	12.4	20.6	17	8	3.2	12	14	5	9.2
P5.3/8	3/8	17.6	26.1	21	12	4.2	17	19	8	23.1
P5.1/2	1/2	21.2	29.3	22.5	14	4.2	21	23	10	30.2

## Raccords en polymère série P pour tuyau impérial Polymer Fittings "P" series for imperial tube

Filets impérial (NTP) / Imperial thread (NTP)

# P5

«T» filet mâle au centre  
"T" centre male thread



Modèle / Model	ØD	R	ØP	A	B	C	E	H	X	Y	Orifice (ømm)	Poids/ weight (g)
P5.3/16.1/8	3/16	NPT1/8	11	8	25	17	19.1	7/16	11	13	2.6	14.2
P5.3/16.1/4	3/16	NPT1/4	11	11	28	17	19.1	9/16	11	13	2.6	20.3
P5.1/4.10-32	1/4	UNF10*32	12.4	5.5	23.1	17	20.6	1/2	12	14	2	14.1
P5.1/4.1/8	1/4	NPT1/8	12.4	8	25.1	17	20.6	1/2	12	14	4.6	16.4
P5.1/4.1/4	1/4	NPT1/4	12.4	11	29.1	17	20.6	9/16	12	14	4.6	24.6
P5.1/4.3/8	1/4	NPT3/8	12.4	12	31.1	17	20.6	11/16	12	14	4.6	36.5
P5.5/16.1/8	5/16	NPT1/8	14.4	8	27	18.5	22.7	9/16	14	16	5	20
P5.5/16.1/4	5/16	NPT1/4	14.4	11	31	18.5	22.7	9/16	14	16	6	27.1
P5.5/16.3/8	5/16	NPT3/8	14.4	12	32	18.5	22.7	11/16	14	16	6	35.1
P5.3/8.1/8	3/8	NPT1/8	17.6	8	32	21	26.1	11/16	17	19	5	36.1
P5.3/8.1/4	3/8	NPT1/4	17.6	11	35	21	26.1	11/16	17	19	8	39.8
P5.3/8.1/2	3/8	NPT1/2	17.6	15	39	21	26.1	7/8	17	19	8	63.2
P5.3/8.3/8	3/8	NPT3/8	17.6	12	36	21	26.1	11/16	17	19	8	47.7
P5.1/2.1/4	1/2	NPT1/4	21.2	11	37	22.5	29.3	7/8	21	23	8	51.9
P5.1/2.3/8	1/2	NPT3/8	21.2	12	38	22.5	29.3	7/8	21	23	9	56.9
P5.1/2.1/2	1/2	NPT1/2	21.2	15	41	22.5	29.3	7/8	21	23	9	67.6

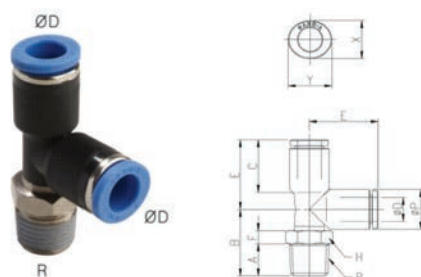
## Raccords en polymère série P pour tuyau impérial Polymer Fittings "P" series for imperial tube

P

Raccords /  
Fittings

Filets impérial (NTP) / Imperial thread (NTP)

**PC5** «T» filet mâle compensé  
"T" offset male thread



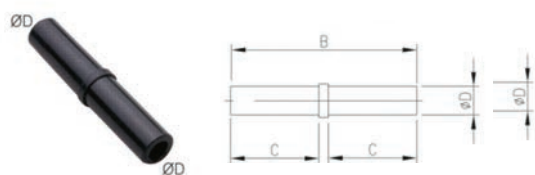
Modèle / Model	ØD	R	ØP	A	B	C	E	H	X	Y	Orifice (ømm)	Poids/weight (g)
PC5.3/16.1/4	3/16	NPT1/4	11	11	28	17	19.4	9/16	11	13	2.6	20.2
PC5.1/4.1/8	1/4	NPT1/8	12.4	8	25	17	20.6	1/2	12	14	4.6	16.4
PC5.1/4.1/4	1/4	NPT1/4	12.4	11	29	17	20.6	9/16	12	14	4.6	24.3
PC5.1/4.3/8	1/4	NPT3/8	12.4	12	31	17	20.6	11/16	12	14	4.6	35.5
PC5.3/8.1/8	3/8	NPT1/8	17.6	8	32	21	26.1	11/16	17	19	5	36.5
PC5.3/8.1/4	3/8	NPT1/4	17.6	11	35	21	26.1	11/16	17	19	8	39.1v
PC5.3/8.3/8	3/8	NPT3/8	17.6	12	36	21	26.1	11/16	17	19	8	48.5
PC5.3/8.1/2	3/8	NPT1/2	17.6	15	39	21	26.1	7/8	17	19	8	63
PC5.1/2.1/4	1/2	NPT1/4	21.2	11	37	22.5	29	7/8	21	23	8	53.5
PC5.1/2.3/8	1/2	NPT3/8	21.2	12	38	22.5	29	7/8	21	23	9	57.2
PC5.1/2.1/2	1/2	NPT1/2	21.2	15	41	22.5	29	7/8	21	23	9	69

561, rue Édouard, Granby (QC) J2G 3Z5 TÉL.: 1 800 665-3565  
www.mscorpion.com | www.scorpionmfg.com

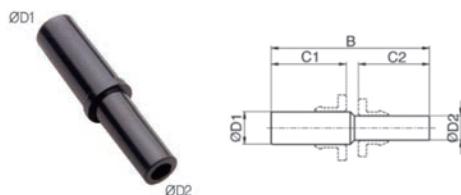
## Raccords en polymère série P pour tuyau impérial Polymer Fittings "P" series for imperial tube

### P7

#### Union mâle Male union



Modèle / Model	ØD	B	C	Orifice (ømm)	Poids/weight (g)
P7.1/4	1/4	37	17	4	1
P7.3/8	3/8	50	21	6.5	2.5
P7.1/2	1/2	50	22.5	9.7	3.7



Modèle / Model	ØD1	ØD2	B	C1	C2	Orifice (ømm)	Poids/weight (g)
P7.5/16.1/4	5/16	1/4	39	18.5	17	4	1.4

### P8

#### Réducteur Reducer



Modèle / Model	ØD1	ØD2	ØP	B	C1	C2	E	X	Y	Orifice (ømm)	Poids/weight (g)
P8.1/4.5/32	1/4	5/32	10.4	40.6	16	17	17.6	10	12	3	3.3
P8.5/16.1/4	5/16	1/4	12.4	44.2	17	18.5	19.2	12	14	5	4.4
P8.3/8.1/4	3/8	1/4	12.4	46.2	17	21	19.2	12	14	5	5.4
P8.3/8.5/16	3/8	5/16	14.4	47.5	18.5	21	20.5	14	16	7	5.9
P8.1/2.1/4	1/2	1/4	12.4	48.2	22.5	17	19.2	12	14	5	5.9
P8.1/2.5/16	1/2	5/16	14.4	49.5	22.5	18.5	20.5	14	16	7	8.9
P8.1/2.3/8	1/2	3/8	17.6	52.4	22.5	21	23	17	19	8	10.6

## Raccords en polymère série P pour tuyau impérial Polymer Fittings "P" series for imperial tube

P

Raccords /  
Fittings

### P9

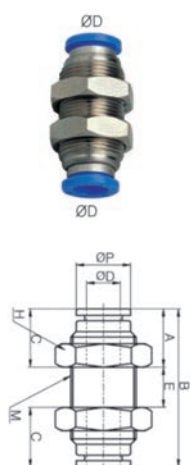
Bouchon  
Fitting plug



Modèle / Model	ØD	B	ØP	C	Poids/ weight (g)
P9.1/4	1/4	34	3	20	0.8
P9.3/8	3/8	41	5	25	2.5
P9.1/2	1/2	43	7	27	3.9

### P10

Passe-cloison  
Bulkhead



Modèle / Model	ØD	M	A	B	C	E	H	ØP	Orifice (ømm)	Poids/ weight (g)
P10.1/4	1/4	UNF9/16	12.9	35.7	17	9.9	11/16	12	5	25.6
P10.3/8	3/8	UNF7/8	16.4	43.3	21	10.5	1	17	8	76.6
P10.1/2	1/2	UNF7/8	15.6	48	22.5	16.8	1	20.2	10	71.5

## Raccords en polymère série P pour tuyau impérial Polymer Fittings "P" series for imperial tube

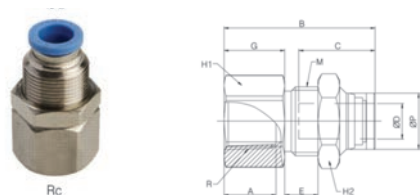
Filets impérial (NTP) / Imperial thread (NTP)

### P10P Passe-cloison «P» Bulkhead union "P"



Modèle / Model	ØD	ØD1	M	PANEL	C	C1	B	ØP	ØP1	E(Min)	E(Max)	H	G	Orifice (ømm)	Poids/weight (g)
P10P.1/4	1/4	1/4	M14 X 1.5P	16.5	17.2	17.2	36	12	18	1	9	17	5	5	10
P10P.3/8	3/8	3/8	M20 X 2.0P	20.5	21	21	43.6	17.6	28	1	12	24	6	8	23
P10P.1/2	1/2	1/2	M24 X 2.0P	24.5	22.5	22.5	47.6	21.2	31	1	14	27	6	10	31

### P11 Passe-cloison filet femelle Bulkhead female thread



Modèle / Model	ØD	Rc	ØP	G	A	B	C	E	H1	H2	M	Orifice (ømm)	Poids/weight (g)
P11.3/16.1/4	3/16	NPT1/4	10.3	14	12	32.3	17	6.01	11/16	11/16	UNF9/16	4	32.8
P11.1/4.1/8	1/4	NPT1/8	12	8.9	9	27.5	17	6.36	11/16	11/16	UNF9/16	5	27.1
P11.1/4.1/4	1/4	NPT1/4	12	13.5	12	32	17	6.36	11/16	11/16	UNF9/16	5	30.2
P11.3/8.1/4	3/8	NPT1/4	17	14	12	35.5	21	5.89	1	1	UNF7/8	9	58.4
P11.3/8.3/8	3/8	NPT3/8	17	15	13	36.5	21	5.89	1	1	UNF7/8	9	73.9
P11.1/2.3/8	1/2	NPT3/8	20.2	15	13	38.5	22.5	8.49	1	1	UNF7/8	10	80.1
P11.1/2.1/2	1/2	NPT1/2	20.2	19	16	42.5	22.5	8.49	1	1	UNF7/8	10	85.1

561, rue Édouard, Granby (QC) J2G 3Z5 TÉL.: 1 800 665-3565  
www.mscorpion.com | www.scorpionmfg.com

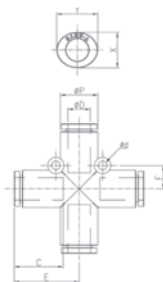
## Raccords en polymère série P pour tuyau impérial Polymer Fittings "P" series for imperial tube

P

Raccords /  
Fittings

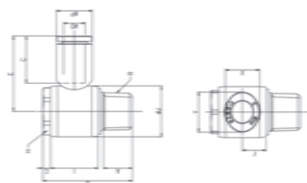
Filets impérial (NTP) / Imperial thread (NTP)

### P14 Croix Cross



Modèle / Model	ØD	ØP	E	C	F	Ød	X	Y	Orifice (ømm)	Poids/weight (g)
P14.1/4	1/4	12.4	22.8	17	8	1/4	12	14	5	12
P14.3/8	3/8	17.6	29.2	21	12	3/8	17	19	8	29.3
P14.1/2	1/2	21.2	29.3	22.5	14	1/2	21	23	10	39.1

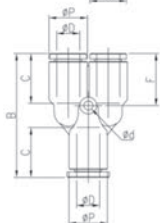
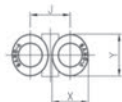
### P15 Coude compact Compact elbow



Modèle / Model	ØD	R	ØP	A	B	C	E	H	ØK	G	X	Y	Orifice (ømm)	Poids/weight (g)
P15.1/4.1/8	1/4	NPT1/8	12.4	8	12	17	23.6	10	14.4	4	12	14	4	15.5
P15.1/4.1/4	1/4	NPT1/4	12.4	11	11.8	17	25.7	14	18.4	4.5	12	14	4	28.4
P15.5/16.1/8	5/16	NPT1/8	14.4	8	12	18.5	25	10	14.4	4	14	16	5	16.4
P15.3/8.1/4	5/16	NPT3/8	14.4	12	15.5	18.5	28.6	19	22	5	14	16	6	51.8
P15.3/8.3/8	3/8	NPT3/8	17.6	12	15.5	21	31.6	19	22	5	17	19	8	54.7
P15.3/8.1/2	3/8	NPT1/2	17.6	15	17.7	21	34.5	24	28	5	17	19	8	91.2
P15.1/2.3/8	1/2	NPT3/8	21	12	15.5	22.5	36	19	22	5	21	23	9	57.7
P15.1/2.1/2	1/2	NPT1/2	21	15	17.7	22.5	36	24	28	5	21	23	9	92.9

561, rue Édouard, Granby (QC) J2G 3Z5 TÉL.: 1 800 665-3565  
www.mscorpion.com | www.scorpionmfg.com

### P23 «Y» tube



Modèle / Model	ØD	ØP	B	C	Ød	J	F	X	Y	Orifice (ømm)	Poids/weight (g)
P23.1/4	1/4	12.4	39.4	17	3.2	12	16.9	12	14	5	9
P23.3/8	3/8	17.6	50.5	21.0	4.2	18	21.5	17	19	8	26
P23.1/2	1/2	21.2	53.0	22.5	4.2	20.8	21	21	23	10	29.1

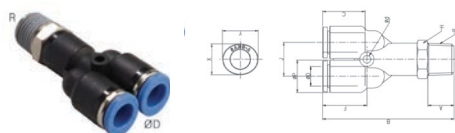
## Raccords en polymère série P pour tuyau impérial Polymer Fittings "P" series for imperial tube

P

Raccords /  
Fittings

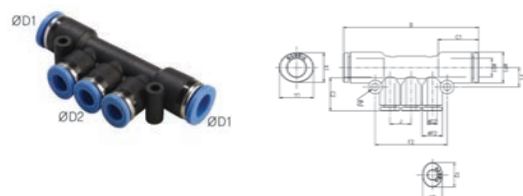
Filets impérial (NTP) / Imperial thread (NTP)

### P24 «Y» mâle «Y» male



Modèle / Model	ØD	R	ØP	A	B	C	Ød	J	F	H	X	Y	Orifice (ømm)	Poids/weight (g)
P24.1/4.1/8	1/4	NPT1/8	12.4	6	41.7	17	3.2	12	16.9	14	12	14	4.6	16.4
P24.1/4.1/8M	1/4	R1/4	/	/	/	/	/	/	/	/	/	/	/	/
P24.1/4.1/4	1/4	NPT1/4	12.4	8	44.7	17	3.2	12	16.9	17	12	14	4.6	24.2
P24.1/4.3/8	1/4	NPT3/8	12.4	10	47.7	17	3.2	12	16.9	20	12	14	4.6	36
P24.3/8.1/4	3/8	NPT1/4	17.6	8	55.2	21	4.2	17.6	21.5	17	17	19	8	41.4
P24.3/8.3/8	3/8	NPT3/8	17.6	10	57.2	21	4.2	17.6	21.5	20	17	19	8	50.3
P24.3/8.1/2	3/8	NPT1/2	17.6	12	59.2	21	4.2	17.6	21.5	24	17	19	8	63
P24.1/2.1/4	1/2	NPT1/4	21	8	57.7	22.5	4.2	21	21	21	21	23	8	54.4
P24.1/2.3/8	1/2	NPT3/8	21	10	59.7	22.5	4.2	21	21	21	21	23	9	59.3
P24.1/2.1/2	1/2	NPT1/2	21	12	61.7	22.5	4.2	21	21	24	21	23	9	72

### P25 Distributeur Distributor



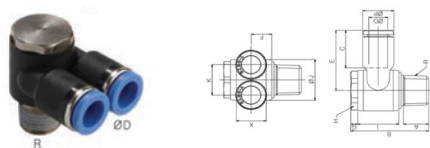
Modèle / Model	ØD1	ØD2	B	C1	C2	ØP1	ØP2	J	F1	F2	Ød	X1	Y1	X2	Y2	Orifice (ømm)	Poids/weight (g)
P25.3/8.1/4	3/8	1/4	85.2	21	17	17.6	12.4	12	9	42	4.24	17	19	12	14	5	28.2

561, rue Édouard, Granby (QC) J2G 3Z5 TÉL.: 1 800 665-3565  
www.mscorpion.com | www.scorpionmfg.com

## Raccords en polymère série P pour tuyau impérial Polymer Fittings "P" series for imperial tube

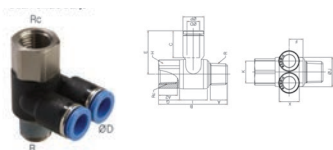
Filets impérial (NTP) / Imperial thread (NTP)

### P26 Coude double compact Double compact elbow



Modèle / Model	ØD	R	ØP	A	B	C	E	H	ØK	G	F	J	Ød	X	Y	Orifice (ømm)	Poids/ weight (g)
P26.1/4.1/8	1/4	NPT1/8	14.4	8	15	17	30.2	9/16	20	4.5	12.5	14	3.2	12	14	4	25.9
P26.3/8.3/8	3/8	NPT3/8	21	12	21	21	38.3	7/8	30	5	17	20	4.4	17	19	8	76.9
P26.1/2.1/2	1/2	NPT1/2	21	15	21	22.5	38.3	1	30	5	17	20	4.4	21	23	9	119.7

### P27 Coudes double modulaires Double elbows modular



Modèle / Model	ØD	R	Rc	ØP	A1	B2	B	C	E	H	ØK	G	F	J	Ød	X	Y	Orifice (ømm)	Poids/ weight (g)
P27.1/4.1/8	1/4	NPT1/8	NPT1/8	14.4	8	12	15	17	30.2	9/16	20	11.5	12.5	14	3.2	12	14	4	28
P27.3/8.3/8	3/8	NPT3/8	NPT3/8	21	12	16	21	21	38.3	7/8	30	17	17	20	4.4	17	19	8	82.9

### P28 «Y» connecteur Plug-in "Y"



Modèle / Model	ØD1	ØD2	ØP	B	C1	C2	Ød	J	F	X	Y	Orifice (ømm)	Poids/ weight (g)
P28.1/4.5/32	1/4	5/32	10.4	55.2	16	17	2.2	9.6	16.2	10	12	2	7.4
P28.5/16.1/4	5/16	1/4	12.4	58.7	17	18.5	3.2	12	16.9	12	14	4	10.0
P28.3/8.5/16	3/8	5/16	14.4	54.7	18.5	21	3.2	14	17.2	14	16	5.5	18.0

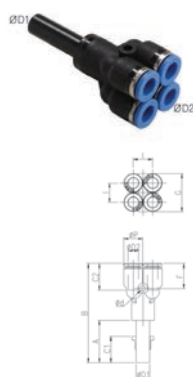
## Raccords en polymère série P pour tuyau impérial Polymer Fittings "P" series for imperial tube

P

Raccords /  
Fittings

Filets impérial (NTP) / Imperial thread (NTP)

### P30 «Y» double réducteur Double reducer «Y»



Modèle / Model	ØD1	ØD2	B	L	ØP1	ØP2	C1	C2	J	Ød	F	Orifice (ømm)	Poids/ weight (g)
P30.1/4.5/32	1/4	5/32	55.2	43.6	10.4	13	16	17	10.4	3.2	14.2	2	13

### P31 «Y» filet mâle double Male thread double "Y"



Modèle / Model	ØD	R	A	B	ØP1	C	J	H	Ød	F	Orifice (ømm)	Poids/ weight (g)
P31.1/4.1/4	1/4	NPT1/4	11	53.9	13	17	13	9/16	3.2	16.9	4.6	27
P31.1/4.1/8	1/4	NPT1/8	8	47.9	13	17	13	9/16	3.2	16.9	3.5	25.4

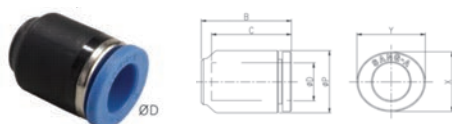
### P35 Coude connecteur Plug-in elbow



Modèle / Model	ØD	ØP	B	C1	E	C2	X	Y	Orifice (ømm)	Poids/ weight (g)
P35.1/4	1/4	12.4	36.1	17	20.6	17	12	14	4	5.8
P35.3/8	3/8	17.6	46.9	21	26.1	21	17	19	9	15.4
P35.1/2	1/2	21.2	52	22.5	29.3	22.5	21	23	9	21.8

## Raccords en polymère série P pour tuyau impérial *Polymer Fittings "P" series for imperial tube*

### P36 Bouchon Cap



Modèle / Model	ØD	ØP	B	C	X	Y	Poids/ weight (g)
P36.1/4	1/4	12.4	19.5	17	12	14	2.9
P36.3/8	3/8	17.6	23.5	21	17	19	7.5
P36.1/2	1/2	21.2	25.5	22.5	21	23	9.8

## Vannes manuelles Hand valves

### Applications

- Utilisé pour activer et désactiver la pression d'air des dispositifs pneumatiques.
- *Used for turning air pressure on and off for pneumatic devices.*

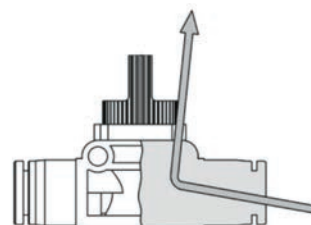
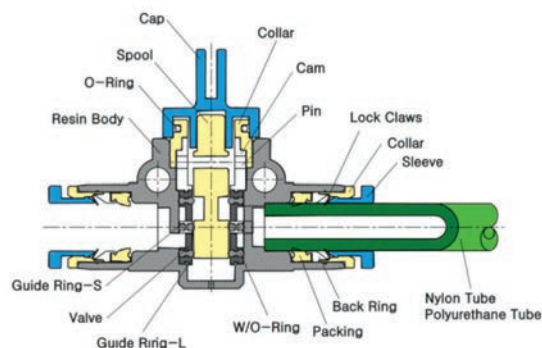
### Caractéristiques / Features

- Lorsqu'elle est désactivée, la vanne de commande directionnelle trois voies évacue la pression résiduelle et bloque l'entrée d'air.
- *When off, the three-way direction control valve discharges the residual pressure and blocks air flow-in.*

### Spécifications / Specifications

Fluide / Fluid	AIR (pas d'autres gaz ni liquides / no other gases or liquids)	
Plage de pression de service / Working Pressure Range	0-284PSI	0 ~ 20Kgf/cm <sup>2</sup> (0~1960kPa)
Pression négative / Negative Pressure	-29.5 in Hg	-750mmHg (10Torr)
Plage de température / Temperature Range	32 ~ 176°F	0 ~ 80°C
Matériau de tube applicable / Applicable Tube Material	Polyuréthane et nylon / Polyurethane and Nylon	

### Schéma structurel / Structural Diagram

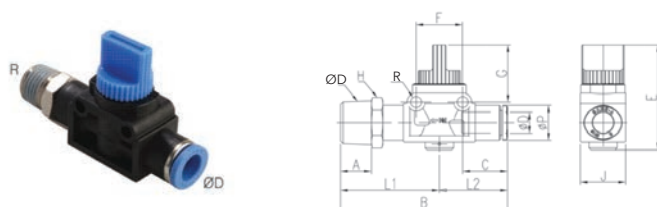


- La vanne de commande directionnelle trois voies, lorsqu'elle coupe l'air, évacue la pression résiduelle vers la sortie, assurant ainsi la sécurité lors de la réparation ou du réglage des dispositifs connectés.
- La vanne de commande directionnelle deux voies n'évacue pas la pression résiduelle et convient à un réservoir ou à tout autre dispositif ne nécessitant pas l'évacuation de la pression résiduelle.
- La vanne de commande directionnelle deux voies convient également aux systèmes utilisant un tuyau à vide.
- *The three-way direction control valve, when the air is stopped, discharges residual pressure to the outlet, which assures safety in repairing or adjusting connected devices.*
- *The two-way direction control valve does not discharge residual pressure, and is suitable for a reservoir tank or other device that does not require a discharging residual pressure.*
- *The two-way direction control valve is also suitable for the system where a vacuum pipe is used.*

## Valves à boule Ball valves

Clapets à  
boules /  
Ball valves

### 1 Valve à main avec échappement Hand valve with exhaust

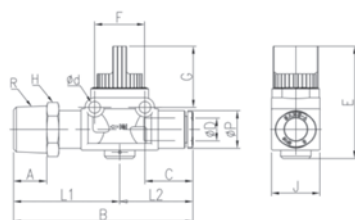


Modèle / Model	ØD	ØP	C	L1	L2	A	B	G	F	H	R	Ød	E	J	Poids/ weight (g)
BALPAL.1/8.06	6	11.2	15.5	24.5	33.5	8	58	22.2	18.2	11	R1/8	4.2	40.7	17.6	22.7
BALPAL.1/8.08	8	13.6	17.8	26.6	35	8	61.6	22.2	18.2	13	R1/8	4.2	40.7	17.6	26.6
BALPAL.1/4.06	6	11.2	15.5	24.5	36.5	11	61	22.2	18.2	14	R1/4	4.2	40.7	17.6	29.9
BALPAL.1/4.08	8	13.6	17.8	26.6	37.5	11	64.1	22.2	18.2	14	R1/4	4.2	40.7	17.6	30.8
BALPAL.1/4.10	10	16.3	19.4	30.5	40.5	11	71	20.1	24	17	R1/4	4.2	40.9	21.2	42.5
BALPAL.1/4.12	12	19.7	22.4	33.4	42.5	11	75.9	20.1	24	19	R1/4	4.2	40.9	21.2	52.1
BALPAL.3/8.06	6	11.2	15.5	24.5	37.5	12	62	22.2	18.2	17	R3/8	4.2	40.7	17.6	37.9
BALPAL.3/8.08	8	13.6	17.8	26.6	38.5	12	65.1	22.2	18.2	17	R3/8	4.2	40.7	17.6	38.3
BALPAL.3/8.10	10	16.3	19.4	30.5	42.5	12	73	20.1	24	17	R3/8	4.2	40.9	21.2	47.6
BALPAL.3/8.12	12	19.7	22.4	33.4	44.5	12	77.9	20.1	24	19	R3/8	4.2	40.9	21.2	57.3
BALPAL.1/2.10	10	16.3	19.4	30.5	45.5	15	76	20.1	24	21	R1/2	4.2	40.9	21.2	64.8
BALPAL.1/2.12	12	19.7	22.4	33.4	47.5	15	80.9	20.1	24	21	R1/2	4.2	40.9	21.2	71.3

## Valves à boule Ball valves

### 2 Valve à main avec échappement Hand valve with exhaust

Clapets à  
boules /  
Ball valves



Modèle / Model	ØD	ØP	C	L1	L2	A	B	G	F	H	R	Ød	E	J	Poids/ weight (g)
BALPAL.06.1/8	6	11.2	15.5	33.5	24.5	8	58	22.2	18.2	11	R1/8	4.2	40.7	17.6	22.7
BALPAL.06.1/4	6	11.2	15.5	36.5	24.5	11	61	22.2	18.2	14	R1/4	4.2	40.7	17.6	29.9
BALPAL.06.3/8	6	11.2	15.5	37.5	24.4	12	62	22.2	18.2	17	R3/8	4.2	40.7	17.6	37.9
BALPAL.08.1/8	8	13.6	17.8	35	26.6	8	61.6	22.2	18.2	13	R1/8	4.2	40.7	17.6	26.6
BALPAL.08.1/4	8	13.6	17.8	37.5	26.6	11	64.1	22.2	18.2	14	R1/4	4.2	40.7	17.6	30.8
BALPAL.08.3/8	8	13.6	17.8	38.5	26.6	12	65.1	22.2	18.2	17	R3/8	4.2	40.7	17.6	38.3
BALPAL.10.1/4	10	16.3	19.4	40.5	30.5	11	71	20.1	24	17	R1/4	4.2	40.9	21.2	42.5
BALPAL.10.3/8	10	16.3	19.4	42.5	30.5	12	73	20.1	24	17	R3/8	4.2	40.9	21.2	47.6
BALPAL.10.1/2	10	16.3	19.4	45.5	30.5	15	76	20.1	24	21	R1/2	4.2	40.9	21.2	64.8
BALPAL.12.1/4	12	19.7	22.4	42.5	33.4	11	75.9	20.1	24	19	R1/4	4.2	40.9	21.2	52.1
BALPAL.12.3/8	12	19.7	22.4	44.5	33.4	12	77.9	20.1	24	19	R3/8	4.2	40.9	21.2	57.3
BALPAL.12.1/2	12	19.7	22.4	47.5	33.4	15	80.9	20.1	24	21	R1/2	4.2	40.9	21.2	71.3

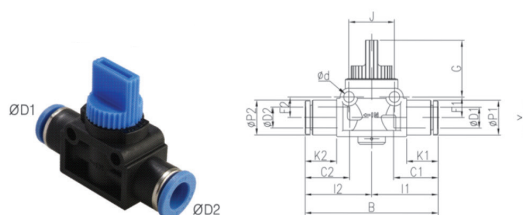


# SCORPION

## Valves à boule Ball valves

Clapets à  
boules /  
Ball valves

### 3 Valve à main avec échappement Hand valve with exhaust



Modèle / Model	ØD1	ØD2	ØP1	ØP2	A	B	C1	C2	E	F1	F2	G	I1	I2	J	K1	K2	Ød	X	Y	Poids/weight (g)
BALPAL.06	6	6	11.2	11.2	17.6	48.9	15.5	15.5	40.7	8	8	22.2	24.5	24.5	18.2	10.5	10.5	4.2	11	13	15.6
BALPAL.08	8	8	13.6	13.6	17.6	53.2	17.8	17.8	40.7	8	8	22.2	26.6	26.6	18.2	12.6	12.6	4.2	13	15	17.6
BALPAL.08.06	8	6	/	/	/	/	/	/	/	/	/	/	/	/	/	/	/	/	/	/	/
BALPAL.10	10	10	16.3	16.3	21.2	61	19.4	19.4	40.9	10.1	10.1	20.1	30.5	30.5	24	13.5	13.5	4.2	16	18.5	26.4
BALPAL.12	12	12	19.7	19.7	21.2	66.8	22.4	22.4	40.9	10.1	10.1	20.1	33.4	33.4	24	16.4	16.4	4.2	19.5	22.5	33
BALPAL.12.10	12	10	/	/	/	/	/	/	/	/	/	/	/	/	/	/	/	/	/	/	/

Modèle / Model	ØD	ØP	B	C	X	Y	Orifice (ømm)	Poids/weight (g)
BALPAL.1/4	1/4	/	/	/	/	/	/	/
BALPAL.3/8	3/8	/	/	/	/	/	/	/
BALPAL.1/2	1/2	/	/	/	/	/	/	/

561, rue Édouard, Granby (QC) J2G 3Z5 TÉL.: 1 800 665-3565  
[www.mscorpion.com](http://www.mscorpion.com) | [www.scorpionmfg.com](http://www.scorpionmfg.com)

## Valves à boule Ball valves

### P32 Valve à main sans échappement Hand valve without exhaust

Clapets à  
boules /  
Ball valves



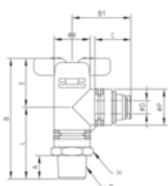
Modèle / Model	ØD1	ØD2	C1	C2	ØP1	ØP2	B	B1	Poids/ weight (g)
P32.06	6	6	17	17	17	17	55.3	23	20.3
P32.08	8	8	18.5	18.5	17	17	57.6	23	21.1
P32.08.06	8	6	/	/	/	/	/	/	/
P32.10	10	10	21	21	24	24	74.4	28	47.5
P32.12	12	12	22	22	24	24	80.2	28	52.4
P32.12.10	12	10	/	/	/	/	/	/	/

Modèle / Model	ØD1	ØD2	C	C2	ØP1	ØP2	B	B1	Orifice (ømm)	Poids/ weight (g)
P32.1/4	1/4	1/4	17	17	17	17	59.4	23	5	40.5
P32.3/8	3/8	3/8	21	21	24	24	78.4	28	8	98
P32.1/2	1/2	1/2	22.5	22.5	24	24	79.3	28	9	102.5

## Valves à boule Ball valves

Clapets à  
boules /  
Ball valves

### P33 Valve à main sans échappement Hand valve without exhaust



Modèle / Model	ØD	R	C	ØP	E	L	A	ØK	H	B	B1	Poids/ weight (g)
P33.06.1/8	6	R1/8	17	17	23	30.75	8	17	17	53.75	27.7	30.9
P33.06.1/4	6	R1/4	17	17	23	33.75	11	17	17	56.75	27.7	36
P33.06.3/8	6	R3/8	17	17	23	34.75	12	17	17	57.75	27.7	42
P33.08.1/8	8	R1/8	18.5	17	23	30.75	8	17	17	53.75	28.85	31.4
P33.08.1/4	8	R1/4	18.5	17	23	33.75	11	17	17	56.75	28.85	36.3
P33.08.3/8	8	R3/8	18.5	17	23	34.75	12	17	17	57.75	28.85	42.3
P33.10.1/4	10	R1/4	21	24	28	44.1	11	24	24	72.1	38.1	93
P33.10.3/8	10	R3/8	21	24	28	45.1	12	24	24	73.1	38.1	98
P33.10.1/2	10	R1/2	21	24	28	49.1	15	24	24	77.1	38.1	105.7
P33.12.1/4	12	R1/4	22	24	28	44.4	11	24	24	72.1	41	95.4
P33.12.3/8	12	R3/8	22	24	28	45.1	12	24	24	73.1	41	100.4
P33.12.1/2	12	R1/2	22	24	28	49.1	15	24	24	77.1	41	108

## Raccords compacts à connexion rapide Compact one-touch fittings

Raccords /  
Fittings

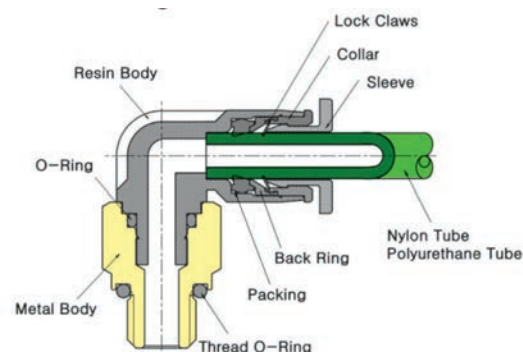
### Applications

- Raccords compacts à connexion rapide utilisés dans les petits types de tuyauterie pneumatique.
- Une large gamme de modèles est disponible pour répondre à la plupart de vos besoins.
- *Compact type one-touch joints used in small types of pneumatic piping.*
- *A wide variety of models are available to meet most your needs.*

### Caractéristiques / Features

- Les raccords à connexion rapide les plus petits du monde présentent un ratio de volume 40 % plus petit et un ratio de diamètre extérieur 20 % plus petit par rapport au type conventionnel.
- Les raccords compacts, qui sont plaqués au nickel, sont excellents non seulement pour leur apparence, mais aussi pour leur résistance à la rouille.
- La manchette elliptique facilite l'application ou le retrait du tube dans les espaces confinés.
- *The world's smallest quick-fitting joints feature 40% smaller volume ratio and 20% smaller O.D. ratio in comparison to the conventional type.*
- *The compact type joints, which nickel plated, are excellent not only in appearance but also in rust resistance.*
- *The elliptical sleeve helps easy application or removal of the tube in confined space.*

### Schéma structurel / Structural Diagram



### Spécifications / Specifications

Fluide / Fluid	AIR (pas d'autres gaz ni liquides / no other gases or liquids)	
Plage de pression de service / Working Pressure Range	0-150PSI	0 ~ 9Kgf/cm <sup>2</sup> (0~900kPa)
Pression négative / Negative Pressure	-29.5 in Hg	-750mmHg (10Torr)
Plage de température / Temperature Range	32 ~ 140°F	0 ~ 60°C
Matériau de tube applicable / Applicable Tube Material	Polyuréthane et nylon / Polyurethane and Nylon	

561, rue Édouard, Granby (QC) J2G 3Z5 TÉL.: 1 800 665-3565  
[www.mscorpion.com](http://www.mscorpion.com) | [www.scorpionmfg.com](http://www.scorpionmfg.com)

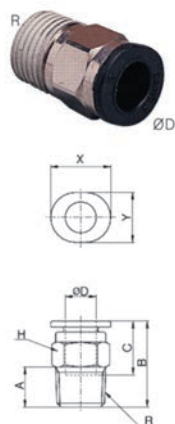
## Raccords ultra compacts séries "PC" Ultra compact fitting "PC" series

Raccords /  
fittings

PC

### P1C

Adapteur mâle droit  
Straight male adapter



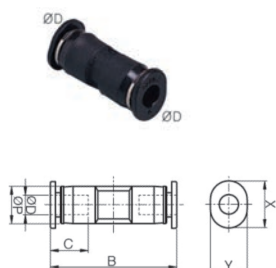
Modèle / Model	ØD	R	C	B	H	A	X	Y	Orifice (ømm)	Poids/weight (g)
P1C.03.M3	3	M3	9.5	13.6	6	3	7	6	1.2	1.3
P1C.03.M5	3	M5	9.5	15.7	8	3.5	7	6	2	3.1
P1C.03.M6	3	M6	9.5	16.5	8	4.5	7	6	2	3.3
P1C.04.M3	4	M3	11.5	17.2	8	3	10	8	1.2	3.2
P1C.04.M5	4	M5	11.5	15.7	8	3.5	10	8	2	2.9
P1C.04.M6	4	M6	11.5	16.9	8	4.5	10	8	3	3.2
P1C.04.1/8	4	R1/8	11.5	15.7	10	8	10	8	3	6
P1C.06.M5	6	M5	12.5	16.8	10	3.5	12	10	2	3.8

## Raccords ultra compacts série "PC"

### Ultra compact fitting "PC" series

PC  
Raccords/  
fittings

## P3C Union



Modèle / Model	ØD	ØP	B	C	X	Y	Orifice (ømm)	Poids/weight (g)
P3C.03	3	6	20.4	9.5	7	6	2.5	1.1
P3C.04	4	8	23.8	11.5	10	8	3	2v

Modèle / Model	ØD	ØP	B	C	X	Y	Orifice (ømm)	Poids/weight (g)
P3C.1/4	1/4	10.4	24	12	12	10	4	3.2

## P3C Reducteur

### Reducer



Modèle / Model	ØD1	ØD2	ØP1	ØP2	C1	C2	B	X1	Y1	X2	Y2	Orifice (ømm)	Poids/weight (g)
P3C.04.03	4	3	6	8	9.5	11.5	22.5	7	6	10	8	2.5	1.5

## P4C Coude

### Elbow



Modèle / Model	ØD	ØP	Ød	C	F	B	X	Y	Orifice (ømm)	Poids/weight (g)
P4C.03	3	6	3.2	9.5	4.5	11.4	7	6	2.5	1.1
P4C.04	4	8	3.2	11.5	5.8	13.9	10	8	3	2.1

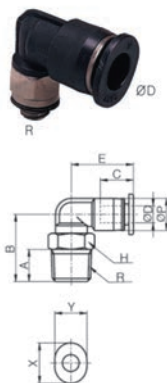
## Raccords ultra compacts séries "PC" Ultra compact fitting "PC" series

Raccords /  
fittings

PC

# P4C

Coude  
Elbow



Modèle / Model	ØD	ØD	ØP	B	C	X	Y				Orifice (ømm)	Poids/ weight (g)
P4C.03.M3	3	M3	6	12.4	11.2	9.5	3	6	7	6	1.2	1.6
P4C.03.M5	3	M5	6	13.5	11.2	9.5	3.5	8	7	6	2	2.7
P4C.03.M6	3	M6	6	14.5	11.2	9.5	4.5	8	7	6	2.4	3
P4C.04.M3	4	M3	8	14	15.6	11.5	3	8	10	8	1.2	3.3
P4C.04.M5	4	M5	8	13.5	15.6	11.5	3.5	8	10	8	2	3.3
P4C.04.M6	4	M6	8	14.5	15.6	11.5	4.5	10	10	8	2.4	3.7
P4C.04.1/8	4	R1/8	8	15.6	15.6	11.5	8	12	10	8	2.8	6.1
P4C.06.M5	6	M5	10.5	13.5	16.9	12.5	3.5	8	12	10	2	3.9
P4C.06.M6	6	M6	10.5	14.5	16.9	12.5	4.5	8	12	10	2.4	4.2
P4C.06.1/8	6	R1/8	10.5	16.9	16.9	12.5	8	10	12	10	3	6.8

Modèle / Model	ØD	R	ØP	B	E	C	A	H	X	Y	Orifice (ømm)	Poids/ weight (g)
P4C.1/8.1/8	1/8	NPT1/8	6.5	17	10.55	9	8	13/32	7.2	6.2	2.4	3.3
P4C.1/4.10-32	1/4	UNF10*32	10.4	15.4	16.3	12	3.5	5/16	12	10	2	3.9
P4C.1/4.1/8	1/4	NPT1/8	10.4	17.45	16.3	12	8	13/32	12	10	3	6.8

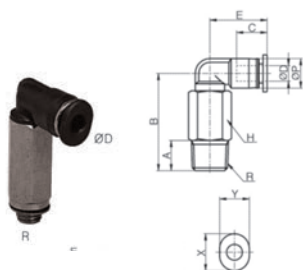
## Raccords ultra compacts série "PC"

### Ultra compact fitting "PC" series

**PC**  
Raccords/  
fittings

## P4LC

Coude étendu  
Extended elbow



Modèle / Model	ØD	R	ØP	B	E	C	A	H	X	Y	Orifice (ømm)	Poids/ weight (g)
P4LC.03.M5	3	M5	6	25.5	11.2	9.5	3.5	8	7	6	2	7.6
P4LC.04.M5	4	M5	8	25.5	15.6	11.5	3.5	8	10	8	2	7.9
P4LC.06.M5	6	M5	10.5	25.5	16.9	12.5	3.5	8	12	10	2	8.5

## P5C

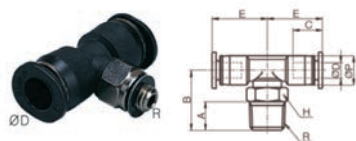
Coude étendu  
Extended elbow



Modèle / Model	ØD	ØP	Ød	F	C	B	X	Y	Orifice (ømm)	Poids/ weight (g)
P5C.03	3	6	3.2	4.5	9.5	11.4	7	6	2.5	1.7
P5C.04	4	8	3.2	5.8	11.5	13.9	10	8	3	3.1

## P5C

«T» mâle centré  
«T» centre male



Modèle / Model	ØD	R	ØP	C	A	B	E	H	X	Y	Orifice (ømm)	Poids/ weight (g)
P5C.04.M5	4	M5	8	11.5	3.5	14.5	13.1	8	10	8	2	4.1
P5C.04.1/8	4	R1/8	8	11.5	8	16.4	13.1	12	10	8	2.8	6.9
P5C.06.M5	6	M5	10.5	12.5	3.5	15.5	14.4	8	12	10	2	5.4

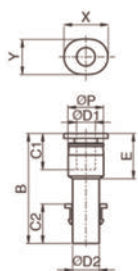
## Raccords ultra compacts séries "PC" Ultra compact fitting "PC" series

Raccords /  
fittings

PC

### P8C

Réducteur  
Reducer

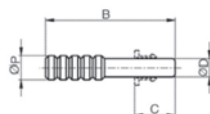


Modèle / Model	ØD1	ØD2	ØP	C1	C2	E	B	X	Y	Orifice (ømm)	Poids/weight (g)
P8C.04.03	3	4	6.5	9.5	11.5	11.2	29.2	7	6	2.5	0.9

Modèle / Model	ØD1	ØD2	ØP	C1	C2	E	B	X	Y	Orifice (ømm)	Poids/weight (g)
P8C.1/4.5/32	5/32	1/4	9	11.7	12	12.8	32.8	10	8	3	1.8

### P9C

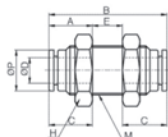
Raccord connecteur  
Fitting plug



Modèle / Model	ØD	B	C	ØP	Poids/weight (g)
P9C.1/8	1/8	22	9.5	4	0.3

### P10C

Cloison  
Bulkhead



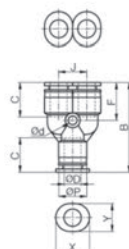
Modèle / Model	ØD	M	ØP	A	E	B	H	C	Orifice (ømm)	Poids/weight (g)
P10C.03	3	M8 X 0.75P	6	7	7.5	20	10	9.5	2	5.2
P10C.04	4	M10 X 1.0P	8	9	7.5	24	12	11.5	3	8.6

## Raccords ultra compacts série "PC" Ultra compact fitting "PC" series

PC  
Raccords/  
fittings

# P23C

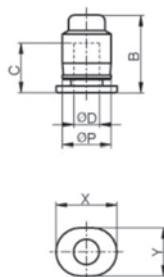
«Y»



Modèle / Model	ØD	ØP	Ød	F	C	J	B	X	Y	Orifice (ømm)	Poids/weight (g)
P23C.03	3	8	3.2	13.2	9.5	8	29.9	7	6	2.5	3.6
P23C.04	4	8	3.2	13.3	11.5	8	30.1	10	8	3	3.4

# P36C

Bouchon  
Cap



Modèle / Model	ØD	ØP	B	C	X	Y	Poids-weight (g)
P36C.03	3	6	10.7	9.5	7	6	0.5

## Raccords rotatifs Rotary joints

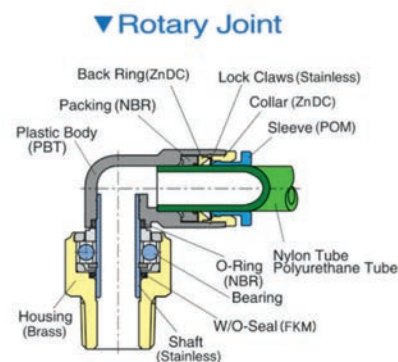
### Applications

- Utilisés pour l'alimentation en air comprimé dans les connexions pivotantes.
- Utilisés pour les tables indexées et les robots industriels.
- *Used for supplying compressed air at swiveling or swiveling connections.*
- *Used for index tables and industrial robots.*

### Caractéristiques / Features

- Roulements intégrés, adaptés aux connexions pneumatiques pivotantes à grande vitesse.
- *Built in bearings, suitable for high-speed swiveling pneumatic connections.*

### Schéma structurel / Structural Diagram



### Spécifications / Specifications

Fluide / Fluid	AIR (pas d'autres gaz ni liquides / no other gases or liquids)	
Plage de pression de service / Working Pressure Range	0-150PSI	0 ~ 9Kgf/cm <sup>2</sup> (0~900kPa)
Pression négative / Negative Pressure	-29.5 in Hg	-750mmHg (10Torr)
Plage de température / Temperature Range	32 ~ 140°F	0 ~ 60°C
Matériau de tube applicable / Applicable Tube Material	Polyuréthane et nylon / Polyurethane and Nylon	

## Raccords en polymère série P Polymer Fittings "P" series

P

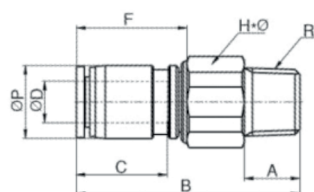
Raccords /  
Fittings

### PR1

Raccord haute rotation droit  
Straight high rotary joint



Modèle / Model	ØD	R	F	ØP	C	A	B	H x Ø	RPM	Orifice (ømm)	Poids/weight (g)
PR1.06.1/8	6	R1/8	18.5	12.4	17	8	36.5	14x15	500	4	16.9
PR1.06.1/4	6	R1/4	20.2	12.4	17	11	36.5	14x15	500	4	21.9
PR1.10.3/8	10	R3/8	29.6	18	21	12	56.1	22x24	300	7,5	66,7

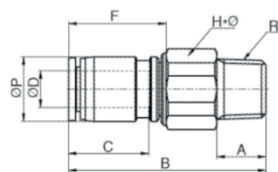


### PR1

Raccord haute rotation droit  
Straight high rotary joint



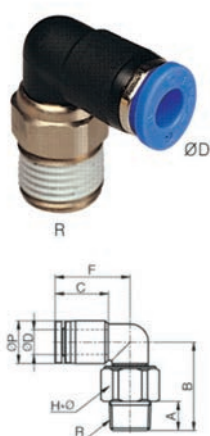
Modèle / Model	ØD	R	F	ØP	C	A	B	H x Ø	RPM	Orifice (ømm)	Poids/weight (g)
PR1.1/4.1/8	1/4	NPT1/8	18.5	12.4	17	8	36.5	9/16	500	4	17.6
PR1.1/4.1/4	1/4	NPT1/4	18.5	12.4	17	11	36.5	9/16	500	4	



561, rue Édouard, Granby (QC) J2G 3Z5 TÉL.: 1 800 665-3565  
[www.mscorpion.com](http://www.mscorpion.com) | [www.scorpionmfg.com](http://www.scorpionmfg.com)

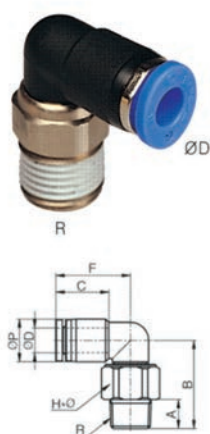
## Raccords en polymère série P Polymer Fittings "P" series

### PR4 Coude haute rotation High rotary elbow



Modèle / Model	ØD	R	F	ØP	C	A	B	H x Ø	RPM	Orifice (ømm)	Poids/weight (g)
PR4.04.1/8	4	R1/8	20.2	10.4	16	8	22	12x13	500	4	13.7
PR4.06.1/8	6	R1/8	22.9	12.4	17	8	24.2	14x15	500	4	17.6
PR4.06.1/4	6	R1/4	22.9	12.4	17	11	26.2	14x15	500	4	22.2
PR4.08.1/8	8	R1/8	25.9	14.4	18.5	8	30.6	17x18	400	6	29
PR4.08.1/4	8	R1/4	25.9	14.4	18.5	11	30.6	17x18	400	6	31.7
PR4.10.3/8	10	R3/8	29.8	17.6	21	12	35.3	22x24	300	7.5	62.9

### PR4 Coude haute rotation High rotary elbow



Modèle / Model	ØD	R	F	ØP	C	A	B	H x Ø	RPM	Orifice (ømm)	Poids/weight (g)
PR4.1/4.1/8	1/4	NPT1/8	22.9	12.4	17	8	24.2	9/16	500	4	17.7
PR4.1/4.1/4	1/4	NPT1/4	22.9	12.4	17	11	26.2	9/16	500	4	19.8
PR4.3/8.3/8	3/8	NPT3/8	29.8	17.6	21	12	35.3	7/8	300	7.5	59.9
PR4.1/2.1/2	1/2	NPT1/2	32.7	21.2	22.5	15	40.5	1	250	9	115

## Raccords d'arrêt Stop fittings

Raccords /  
Fittings

### Applications

- Installé là où les connexions pneumatiques sont fréquemment modifiées.
- Utilisé en laboratoire ou pour instruire les connexions pneumatiques.
- *Installed where the pneumatic connections are changed frequently.*
- *Used at laboratory or for instructing pneumatic connections.*

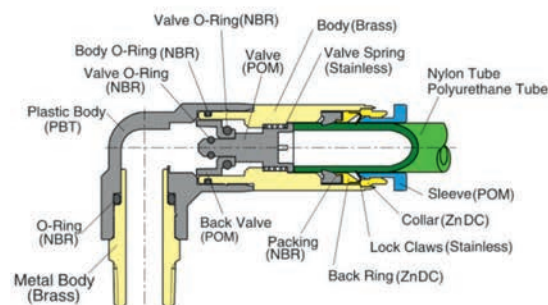
### Caractéristiques / Features

- Lors de la déconnexion du tube, le flux d'air s'arrêtera.
- *Upon disconnecting the tube, the airflow will stop.*

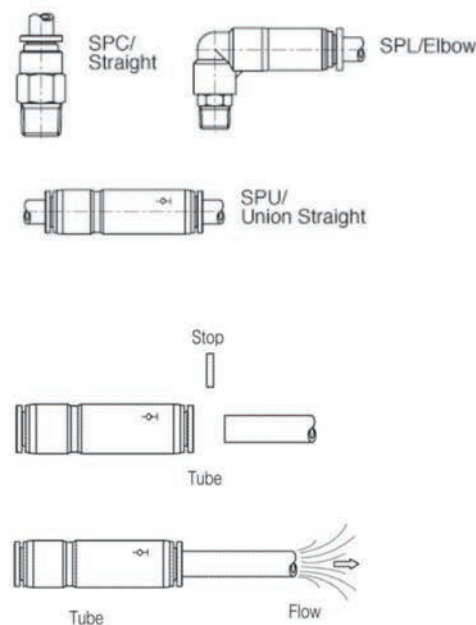
### Spécifications / Specifications

Fluide / Fluid	AIR (pas d'autres gaz ni liquides / no other gases or liquids)	
Plage de pression de service / Working Pressure Range	0-150PSI	0 ~ 9Kgf/cm <sup>2</sup> (0~900kPa)
Pression négative / Negative Pressure	-29.5 in Hg	-750mmHg (10Torr)
Plage de température / Temperature Range	32 ~ 140°F	0 ~ 60°C
Matériau de tube applicable / Applicable Tube Material	Polyuréthane et nylon / Polyurethane and Nylon	

### Schéma structurel / Structural Diagram



### Méthode de contrôle / Control Method

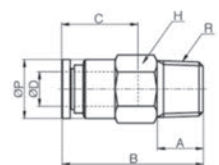


## Accessoires Accessories

Accessoires /  
Accessories

### P1S

Stop  
Stop fitting



Modèle / Model	ØD	R	H	C	ØP	B	A	Poids/ weight (g)
P1S.06.1/8	6	R1/8	12	17	12	27.8	8	12.7
P1S.06.1/4	6	R1/4	14	17	13	27.8	11	21.3
P1S.08.1/4	8	R1/4	14	18.5	14	31.8	11	20.4
P1S.10.3/8	10	R3/8	17	21	17	36.1	12	34.3

Modèle / Model	ØD	R	H	C	ØP	B	A	Poids/ weight (g)
P1S.1/4.1/8	1/4	NPT1/8	1/2	17	12	27.8	8	14.7
P1S1/4.1/4	1/4	NPT1/4	9/16	17	13	27.8	11	21.3

### P3S

Stop  
Stop fitting



Modèle / Model	ØD	C1	C2	ØP	B	Poids/ weight (g)	Modèle / Model	ØD	C1	C2	ØP	B	Poids/ weight (g)
P3S.04	4	16	16	10	42.9	5.5	P3S.1/4	1/4	17	17	12.4	47.2	7.7
P3S.06	6	17	17	12.4	46.9	8.2	P3S.3/8	3/8	21	21	17.6	60.4	25.3
P3S.08	8	18.5	18.5	14.4	52.6	12.7	P3S.1/2	1/2	22.5	22.5	21.2	70.4	33.3
P3S.10	10	21	21	17.6	59.2	22.9							
P3S.12	12	22	22	21.2	71.8	36.8							



# SCORPION

Raccords /  
Fittings

## Vannes de non-retour Check valves

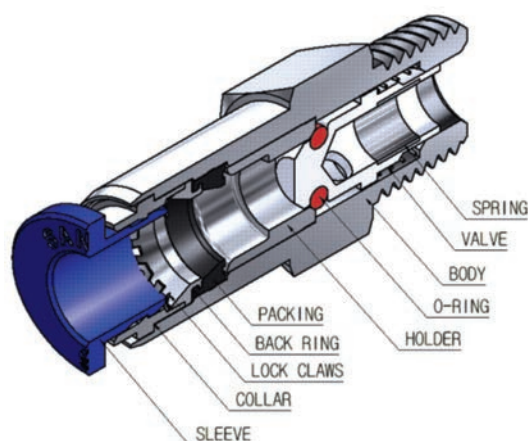
### Applications

- Les vannes de non-retour permettent le flux d'air dans une seule direction.
- Utilisées pour maintenir la pression de sortie à un niveau constant.
- *Check Valves permit airflow in one direction.*
- *Used for maintaining the output pressure at a constant level.*

### Caractéristiques / Features

- Les vannes de non-retour permettent le flux d'air dans une direction, mais l'arrêtent dans la direction inverse.
- Les vannes de non-retour fonctionnent à une pression de 0,1 kgf/cm<sup>2</sup>, maintiennent 1,42 PSI en vide et se connectent à basse pression.
- *The check valves permit the airflow in one direction but stops in the reverse direction.*
- *The check valves works at the pressure of 0.1 kg f/cm<sup>2</sup>, keeps 1.42 PSI in vacuum and connects at a low pressure.*

### Schéma structurel / Structural Diagram



### Spécifications / Specifications

Fluide / Fluid	AIR (pas d'autres gaz ni liquides / no other gases or liquids)	
Plage de pression de service / Working Pressure Range	0-284PSI	0 ~ 0Kgf/cm <sup>2</sup> (0~1960kPa)
Pression négative / Negative Pressure	-29.5 in Hg	-750mmHg (10Torr)
Plage de température / Temperature Range	32 ~ 176°F	0 ~ 80°C
Matériau de tube applicable / Applicable Tube Material	Polyuréthane et nylon / Polyurethane and Nylon	

### Méthode de contrôle / Control Method

Type	Contrôle de l'entrée d'air / Meter IN	Contrôle de la sortie d'air / Meter OUT
Flux d'air / Air flow	Filetage pour tube / Thread to Tube	Tube vers filetage / Tube to Thread
PCVC		

561, Rue Édouard, Granby, QC J2G 3Z5 TEL.: 1-800-665-3565  
[www.mscorpion.com](http://www.mscorpion.com) | [www.scorpionmfg.com](http://www.scorpionmfg.com)

## Accessoires Accessories

Accessoires /  
Accessories

### CP3

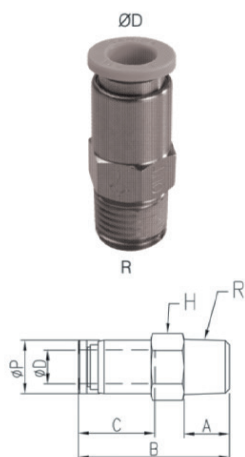
Valve de vérification  
Check valve



Modèle / Model	ØD	C1	C2	ØP	B	Poids/ weight (g)
CP3.04	4	16	16	10	40.4	4.9
CP3.06	6	17	17	11.2	47.7	7.5

### CP1

Valve de vérification  
Check valve



Modèle / Model	ØD	R	H	C	ØP	B	A	Poids/ weight (g)
CP1.06.1/8	6	R1/8	12	17	11	32.25	8	13.6
CP1.06.1/4	6	R1/4	14	17	11	32.25	11	22
CP1.08.1/4	8	R1/4	14	18.5	13	36.6	11	21.6
CP1.10.3/8	10	R3/8	24	21	25	60.7	12	43

## Contrôleurs de vitesse Speed controllers

Raccords /  
Fittings

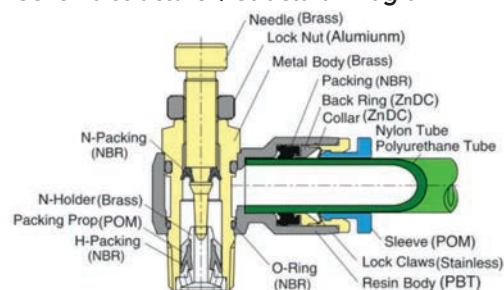
### Applications

- Vanne utilisée pour contrôler la vitesse de fonctionnement d'un dispositif de commande.
- Utilisée pour le mouvement des machines telles que les cylindres, les doigts pneumatiques, etc.
- Valve used for controlling the operation speed of a driving device.
- Used for movement of machines such as cylinder, pneumatic finger, etc.

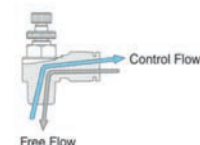
### Caractéristiques / Features

- Permet précisément le débit d'air optimal pour un mouvement fluide des cylindres des dispositifs de commande.
- Le corps compact et léger permet une utilisation dans les espaces confinés.
- Un flux d'air unidirectionnel est disponible pour les méthodes de contrôle du flux d'échappement ou d'entrée.
- Le design compact offre une gamme de vitesses comparable à celle des régulateurs de vitesse conventionnels.
- Precisely permit the optimal rate of airflow for the smooth cylinder movement of driving devices.
- The Compact and light body permits use in confined space.
- Uni-directional airflow is available for either exhaust or inlet flow control methods.
- The compact design provides a comparable range of speed as the conventional speed controllers do.

### Schéma structurel / Structural Diagram



### Cas d'utilisation / Case in use



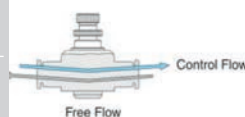
#### ► Out-Type

- The way to control of airflow from the thread to the sleeve.
- Air passes freely from the sleeve to the thread.



#### ► In-Type

- The way to control of airflow from the sleeve to the thread.
- Air passes freely from the thread to the sleeve.



#### ► Flat-Type

- The way to control of Free Flow or Control Flow upon piping in accordance with the signal on the body.
- Air flows from each side of sleeve.

### Spécifications / Specifications

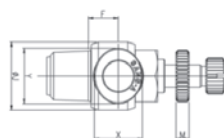
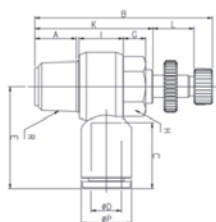
Fluide / Fluid	AIR (pas d'autres gaz ni liquides / no other gases or liquids)	
Plage de pression de service / Working Pressure Range	0-150PSI	0 ~ 9Kgf/cm <sup>2</sup> (0~900kPa)
Pression négative / Negative Pressure	7.5PSI	0.5gf/cm <sup>2</sup> (50kPa)
Plage de température / Temperature Range	32 ~ 140°F	0 ~ 60°C
Matériau de tube applicable / Applicable Tube Material	Polyuréthane et nylon / Polyurethane and Nylon	

## Contrôleur de débit Flow Control

contrôleurs  
de débit / Flow  
control

### MRFC P

Régulateur de débit sortant  
Flow regulator OUT



Modèle / Model	ØD	R	ØP	A	B	C	E	F	G	H	I	ØJ	K	L	M	X	Y	Poids/ weight (g)
MRFCP.04.M5	4	M5	9	3.5	29.5	14.5	19.1	6.5	4	8	9.1	10.4	19.5	5	2.5	8.6	10.8	8
MRFCP.04.1/8	4	R1/8	9	7.7	40.1	14.5	20.9	7	4	10	12.2	14.4	25.6	10.5	3.5	8.6	10.8	17.2
MRFCP.04.1/4	4	R1/4	9	11.2	48	14.5	22.8	7	6	14	12	18.4	31.9	11.1	3.5	8.6	10.8	34.4
MRFCP.06.M5	6	M5	11.2	3.5	29.5	15.5	21	7.7	4	8	9.1	10.4	19.5	5	2.5	8.6	10.8	9.1
MRFCP.06.1/8	6	R1/8	11.2	7.7	40.1	15.5	22	7	4	10	12.2	14.4	25.6	10.5	3.5	11	13	17.9
MRFCP.06.1/4	6	R1/4	11.2	11.2	48	15.5	24	7	6	14	12	18.4	31.9	11.1	3.5	11	13	35.1
MRFCP.06.3/8	6	R3/8	11.2	13.3	54.2	15.5	26	8.7	5	19	15.7	22	37.2	12	3.5	11	13	62.5
MRFCP.08.1/8	8	R1/8	13.6	7.7	40.1	17.8	25.1	8	4	10	12.2	14.4	25.6	10.5	3.5	13	15	19
MRFCP.08.1/4	8	R1/4	13.6	11.2	48	17.8	27.6	8.1	6	14	12	18.4	31.9	11.1	3.5	13	15	36.1
MRFCP.08.3/8	8	R3/8	13.6	13.3	54.2	17.8	28.6	8.1	5	19	15.7	22	37.2	12	3.5	13	15	63.5
MRFCP.08.1/2	8	R1/2	13.6	16.5	59.8	17.8	31.6	8.4	5.5	24	18	28	42.8	12	3.5	13	15	94
MRFCP.10.1/4	10	R1/4	16.3	11.2	48	19.4	29.6	9.6	6	14	12	18.4	31.9	11.1	3.5	16	18.5	38.9
MRFCP.10.3/8	10	R3/8	16.3	13.3	54.2	19.4	30	9.7	5	19	15.7	22	37.2	12	3.5	16	18.5	67.8
MRFCP.10.1/2	10	R1/2	16.3	16.5	59.8	19.4	32.9	10	5.5	24	18	28	42.8	12	3.5	16	18.5	96.7
MRFCP.12.1/4	12	R1/4	19.7	11.2	48	22.4	33.9	11.3	6	14	12	18.4	31.9	11.1	3.5	19.5	22.5	42.5
MRFCP.12.3/8	12	R3/8	19.7	13.3	54.2	22.4	35.9	11.4	5	19	15.7	22	37.2	12	3.5	19.5	22.5	70.6
MRFCP.12.1/2	12	R1/2	19.7	16.5	59.8	22.4	38.9	11.7	5.5	24	18	28	42.8	12	3.5	19.5	22.5	100.4

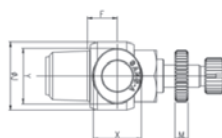
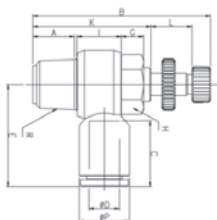
561, rue Édouard, Granby (QC) J2G 3Z5 TÉL.: 1 800 665-3565  
[www.mscorpion.com](http://www.mscorpion.com) | [www.scorpionmfg.com](http://www.scorpionmfg.com)

## Contrôleur de débit Flow control

### MRFC P

Régulateur de débit entrant  
Flow regulator IN

contrôleurs  
de débit / Flow  
control



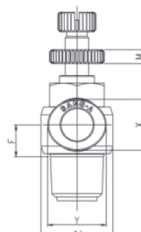
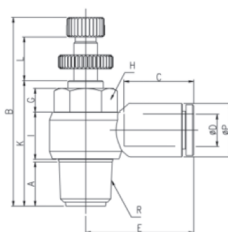
Modèle / Model	ØD	R	ØP	A	B	C	E	F	G	H	I	ØJ	K	L	M	X	Y	Poids/ weight (g)
MRFCP.04.M5-I	4	M5	9	3.5	29.5	14.5	19.1	6.5	4	8	9.1	10.4	19.5	5	2.5	8.6	10.8	8
MRFCP.04.1/8-I	4	R1/8	9	7.7	40.1	14.5	20.9	7	4	10	12.2	14.4	25.6	10.5	3.5	8.6	10.8	17.2
MRFCP.06.M5-I	6	M5	11.2	3.5	29.5	15.5	21	7.7	4	8	9.1	10.4	19.5	5	2.5	8.6	10.8	9.1
MRFCP.06.1/8-I	6	R1/8	11.2	7.7	40.1	15.5	22	7	4	10	12.2	14.4	25.6	10.5	3.5	11	13	17.9
MRFCP.06.1/4-I	6	R1/4	11.2	11.2	48	15.5	24	7	6	14	12	18.4	31.9	11.1	3.5	11	13	35.1
MRFCP.06.3/8-I	6	R3/8	11.2	13.3	54.2	15.5	26	8.7	5	19	15.7	22	37.2	12	3.5	11	13	62.5
MRFCP.08.1/8-I	8	R1/8	13.6	7.7	40.1	17.8	25.1	8	4	10	12.2	14.4	25.6	10.5	3.5	13	15	19
MRFCP.08.1/4-I	8	R1/4	13.6	11.2	48	17.8	27.6	8.1	6	14	12	18.4	31.9	11.1	3.5	13	15	36.1
MRFCP.08.3/8-I	8	R3/8	13.6	13.3	54.2	17.8	28.6	8.1	5	19	15.7	22	37.2	12	3.5	13	15	63.5
MRFCP.08.1/2-I	8	R1/2	13.6	16.5	59.8	17.8	31.6	8.4	5.5	24	18	28	42.8	12	3.5	13	15	94
MRFCP.10.1/4-I	10	R1/4	16.3	11.2	48	19.4	29.6	9.6	6	14	12	18.4	31.9	11.1	3.5	16	18.5	38.9
MRFCP.10.3/8-I	10	R3/8	16.3	13.3	54.2	19.4	30	9.7	5	19	15.7	22	37.2	12	3.5	16	18.5	67.8
MRFCP.10.1/2-I	10	R1/2	16.3	16.5	59.8	19.4	32.9	10	5.5	24	18	28	42.8	12	3.5	16	18.5	96.7
MRFCP.12.1/4-I	12	R1/4	19.7	11.2	48	22.4	33.9	11.3	6	14	12	18.4	31.9	11.1	3.5	19.5	22.5	42.5
MRFCP.12.3/8-I	12	R3/8	19.7	13.3	54.2	22.4	35.9	11.4	5	19	15.7	22	37.2	12	3.5	19.5	22.5	70.6
MRFCP.12.1/2-I	12	R1/2	19.7	16.5	59.8	22.4	38.9	11.7	5.5	24	18	28	42.8	12	3.5	19.5	22.5	100.4

## Contrôleur de débit Flow Control

contrôleurs  
de débit / Flow  
control

### MRFC P

Régulateur de débit sortant  
Flow regulator OUT



Modèle / Model	ØD	R	C	E	A	H	ØP	ØK	L1(Max)	L2	Poids/ weight (g)
MRFCP.5/32.10-32	5/32	UNF10*32	16	18.4	3.5	5/16	10.4	10	26.5	6.5	8.1
MRFCP.5/32.1/8	5/32	NPT1/8	16	18.4	3.5	7/16	10.4	10	26.5	6.5	18.4
MRFCP.1/4.10-32	1/4	UNF10*32	17	21.3	12.5	5/16	12.4	10	47	15	10.9
MRFCP.1/4.1/8	1/4	NPT1/8	17	21.7	7	7/16	12.4	14.4	36	12	19
MRFCP.1/4.1/4	1/4	NPT1/4	17	23.8	10	9/16	12.4	18.4	41.5	12.5	36
MRFCP.1/4.3/8	1/4	NPT3/8	17	26.3	12.6	3/4	12.4	22	47	14.5	63.9
MRFCP.5/16.1/8	5/16	NPT1/8	18.5	23.5	15.5	7/16	14.4	14.4	52	15.7	20.1
MRFCP.5/16.1/4	5/16	NPT1/4	18.5	26.7	10	9/16	14.4	18.4	41.5	14.5	37.3
MRFCP.3/8.1/4	3/8	NPT1/4	21	30.5	12.5	9/16	17.6	18.4	47	17.5	40.4
MRFCP.3/8.3/8	3/8	NPT3/8	21	30.9	15.5	3/4	17.6	22	52	19	67.7
MRFCP.3/8.1/2	3/8	NPT1/2	21	33.8	15.5	1/1	17.6	28	52	19	102.9
MRFCP.1/2.3/8	1/2	NPT3/8	22.5	34.8	12.6	3/4	21.2	22	52	19	70
MRFCP.1/2.1/2	1/2	NPT1/2	22.5	36.3	15.5	1/1	21.2	28	52	19	104.7

## Contrôleur de débit Flow control

### MRFC P

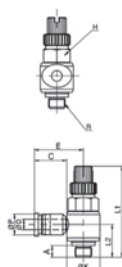
Régulateur de débit entrant  
Flow regulator IN

contrôleurs  
de débit / Flow  
control



Modèle / Model	ØD	R	C	E	A	H	ØP	ØK	L1(Max)	L2	Poids/ weight (g)
MRFCP.5/32.10-32-I	5/32	UNF10*32	16	18.4	3.5	5/16	10.4	10	26.5	6.5	8.1
MRFCP.5/32.1/8-I	5/32	NPT1/8	16	18.4	3.5	7/16	10.4	10	26.5	6.5	18.4
MRFCP.1/4.1/4-I	1/4	NPT1/4	17	23.8	10	9/16	12.4	18.4	41.5	12.5	36
MRFCP.1/4.3/8-I	1/4	NPT3/8	17	26.3	12.6	3/4	12.4	22	47	14.5	63.9
MRFCP.3/8.1/4-I	3/8	NPT1/4	21	30.5	12.5	9/16	17.6	18.4	47	17.5	40.4
MRFCP.3/8.3/8-I	3/8	NPT3/8	21	30.9	15.5	3/4	17.6	22	52	19	67.7
MRFCP.3/8.1/2-I	3/8	NPT1/2	21	33.8	15.5	1/1	17.6	28	52	19	102.9
MRFCP.1/2.3/8-I	1/2	NPT3/8	22.5	34.8	12.6	3/4	21.2	22	52	19	70
MRFCP.1/2.1/2-I	1/2	NPT1/2	22.5	36.3	15.5	1/1	21.2	28	52	19	104.7

### Régulateur de débit sortant Flow control out

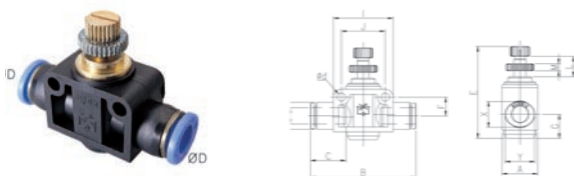


Modèle / Model	ØD	R	C	E	A	H	ØP	ØK	L1 (Max)	L2	Poids/ weight (g)
MRFCPC.03.M5	3	M5	9.5	14	4	8	6.3	10	25	6.4	8.1

## Contrôleur de débit Flow Control

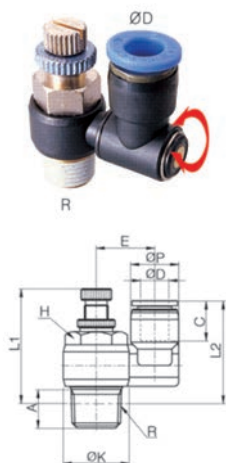
contrôleurs  
de débit / Flow  
control

### Régulateur de débit unidirectionnel Flow control unidirectional



Modèle / Model	ØD	ØP	A	B	C	E	F	G	I	J	L	M	Ød	X	Y	Poids/ weight (g)
6.01.DIA.04	4	9	11	38.8	14.5	28.7	6.5	6.5	20	14	5	2.5	3.2	8.6	10.8	11.54
6.01.DIA.06	6	11.2	15	46.7	15.5	40.9	8.5	10.9	28	20	9.5	3.5	4.2	11	13	27.61
6.01.DIA.08	8	13.6	18	53	17.8	46.2	9.5	12	30	22	10.2	3.5	4.2	13	15	40.37
6.01.DIA.10	10	16.3	21	60.6	19.4	52.5	11	12	34	26	11.5	3.5	4.2	16	18.5	66.35
6.01.DIA.12	12	19.7	28	73.8	22.4	55.6	13	16	40	32	11.5	3.5	4.2	19.5	22.5	110.59

Modèle / Model	ØD	A	B	Ød	C	F	G	J	ØP	S	Poids/ weight (g)
6.01.DIA.1/4	1/4	15	47.2	4.3	17	8.5	18.5	20	12.4	11	27.5
6.01.DIA.3/8	3/8	21	59.6	4.3	21	11	23	20	17.6	12	66.4
6.01.DIA.1/2	1/2	28	71.4	4.3	22.5	13	20.5	32	21.2	16	109.6



### Contrôleur de vitesse Pilot speed controller

Modèle / Model	ØD	R	C	E	A	H	ØP	ØK	L1(Max)	L2	Poids/ weight (g)
PCV.MRFCP.0.6.1/8	6	R1/8	17	18.1	8	10	12.4	14.4	36	35.3	24.8
PCV.MRFCP.0.8.1/4	8	R1/4	18.5	20.1	11.2	14	14.4	18.4	41.5	37.8	46.2
PCV.MRFCP.10.3/8	10	R3/8	21	22.5	13.3	19	17.6	22	47	41.5	84.6
PCV.MRFCP.12.1/2	12	R1/2	22.5	24.9	16.5	24	21.2	28	52	44	95



# SCORPION

## Silencieux Silencers

### ST

### Silencieux plastique ST Plastic silencers ST

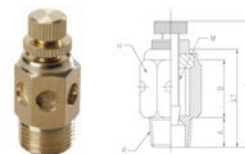
Modèle / Model	Thread (G)	R	ØR	I	G	A	H1	H2	G1	G2	Poids/weight (g)
ST.1/8	1/8	R1/8	10.5	36.1	25.7	8	-	5.5	-	2.4	3
ST.1/4	1/4	R1/4	22	53.7	43	10	19	12	8	2.7	10.5
ST.3/8	3/8	R3/8	25	54.5	58	13.5	22	14	10	3.0	18.5
ST.1/2	1/2	R1/2	30	93.5	64	15.5	27	19	10.5	3.5	29.5



Silencieux /  
Silencers

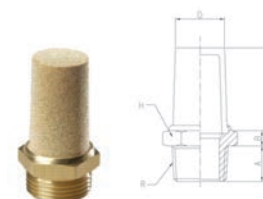
### Échappement ajustable Exhaust adjustable

Modèle / Model	Thread (G)	R	A	B	L1	L	H	M	Poids/weight (g)
6.12.18	1/8	R1/8	7	13.5	22.9	34.2	13	M4 X 0.5	16
6.12.14	1/4	R1/4	9.5	15.5	27.5	38.5	14	M5 X 0.5	28
6.12.38	3/8	R3/8	10.5	17.5	30.5	44	17	M7 X 0.75	44.5
6.12.12	1/2	R1/2	12	20	34	48.5	22	M9 X 0.75	77.5



### Silencieux en laiton Silencers brass

Modèle / Model	Thread (G)	R	A	B	L	D	H	Poids/weight (g)
6.06.05	M5	M5	4	3	20.7	4	9	3
6.06.18	1/8	R1/8	7	3.5	24.5	8	12	6
6.06.14	1/4	R1/4	9.5	4	31.5	10	15	13
6.06.38	3/8	R3/8	10.5	5	39.9	12	19	22
6.06.12	1/2	R1/2	12	6	47.3	15	22	37
6.06.34	3/4	R3/4	12	6.5	55.8	19	27	55
6.06.01	1"	R1	14.5	7	70.5	32	36	122.5

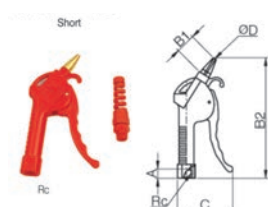


561, rue Édouard, Granby (QC) J2G 3Z5 TÉL.: 1 800 665-3565  
[www.mscorpion.com](http://www.mscorpion.com) | [www.scorpionmfg.com](http://www.scorpionmfg.com)

## Pistolet à air en plastique Plastic air guns

### GPC

Pistolet à air court  
Short air gun

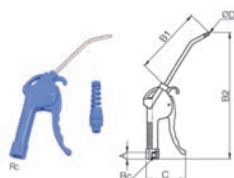


Modèle / Model	B1	B2	F	H	C	ØD	Rc	A	Poids/ weight (g)
----------------	----	----	---	---	---	----	----	---	-------------------------

GPC Blue	25	187	CM22	14	95	2.5	R1/4	12	143.8
----------	----	-----	------	----	----	-----	------	----	-------

### GPM

Pistolet à air moyen  
Medium air gun



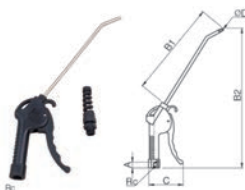
Modèle / Model	B1	B2	F	H	C	ØD	Rc	A	Poids/ weight (g)
----------------	----	----	---	---	---	----	----	---	-------------------------

GPM Black	105	260	CM22	14	95	2.5	R1/4	12	145.8
-----------	-----	-----	------	----	----	-----	------	----	-------

GPM Blue	105	200	CM22	14	95	2.5	R1/4	12	145.8
----------	-----	-----	------	----	----	-----	------	----	-------

### GPL

Pistolet à air long  
Long air gun



Modèle / Model	B1	B2	F	H	C	ØD	Rc	A	Poids/ weight (g)
----------------	----	----	---	---	---	----	----	---	-------------------------

GPL Black	221	321	CM22	14	95	2.5	R1/4	12	164.4
-----------	-----	-----	------	----	----	-----	------	----	-------

GPL Blue	221	321	CM22	14	95	2.5	R1/4	12	164.4
----------	-----	-----	------	----	----	-----	------	----	-------



## Tube en polyuréthane Polyurethane Tube

Raccords /  
Fittings

### Applications

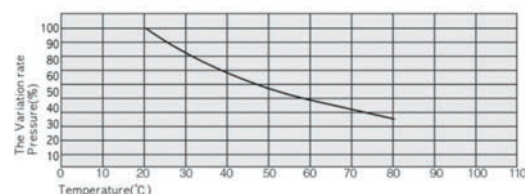
- Utilisé pour les robots industriels et les tuyauteries pneumatiques.
- Utilisé pour diverses applications selon les fonctions.
- *Used for industrial robots and pneumatic piping.*
- *Used for various applications by functions.*

### Caractéristiques / Features

- Une flexibilité supérieure à celle du nylon (PA) aide à améliorer les performances.
- Une flexibilité supérieure à basse température.
- *Higher flexibility than nylon (PA) helps working achievement.*
- *Higher flexibility in low temperature.*

### Pression de travail / Working pressure

- Limites de température du tube : -40°C à 80°C
- Pression normale : contrôler la pression normale à 1/3 de la pression de rupture du tube.
- *Temperature limits of tube: -40°C-80°C*
- *Normal Pressure: control normal pressure within 1/3 of tube burst pressure.*



### Spécifications / Specifications

Fluide / Fluid	AIR (pas d'autres gaz ni liquides / no other gases or liquids)	
Plage de pression de service / Working Pressure Range	0-150PSI	0 ~ 9Kgf/cm <sup>2</sup> (0~900kPa)
Pression négative / Negative Pressure	-29.5PSI	-750mmHg(10Torr)
Plage de température / Temperature Range	32 ~ 140°F	-15 ~ 60°C

### Précautions courantes pour les séries de tubes Common precautions of tube series

Never fail to check the following

#### WARNING

1. Never use for application other than air.  
Using for applications other than air, it causes water leakage by breakage of crack of tube from chemical reaction.
2. Installing the tube near heater, it causes exposition of tube from heat.
3. Scarring the tube with a gimlet or a pin, it causes breakage of tube.
4. Twisting, screwing or bending the tube, it causes breakage of leakage of air.
5. Never use tube in a place of rising spatter.

#### CAUTION

1. Be sure to keep the radius of curvature of tube per size.
2. Be sure to leave a margin for unexpected additional length of tube when piping.
3. Be sure to check that the section of tube is at a right angle (90) or tube is oval, not round.

561, rue Édouard, Granby (QC) J2G 3Z5 TÉL.: 1 800 665-3565  
[www.mscorpion.com](http://www.mscorpion.com) | [www.scorpionmfg.com](http://www.scorpionmfg.com)

## Tubulure Tubing

tubulure /  
tubing

### Tube en polyuréthane métrique Polyurethane tubing metric



Modèle / Model	Qté	OD (mm)	ID (mm)	* Color / couleur	
PUR.03 (*)	Au pied	3	2	BK	Noir/Black
PUR.03.660 (*)	Rouleau	3	2	C	Clair/Clear
PUR.04 (*)	Au pied	4	2	R	Rouge/Red
PUR.04.660 (*)	Rouleau	4	2	BL	Bleu/Blue
PUR.06 (*)	Au pied	6	4	Y	Jaune/Yellow
PUR.06.330 (*)	Rouleau	6	4	G	Vert/Green
PUR.8 (*)	Au pied	8	5.5	GR	Gris/Grey
PUR.8.330 (*)	Rouleau	8	5.5	O	Orange
PUR.10 (*)	Au pied	10	6.5		
PUR.10.330 (*)	Rouleau	10	6.5		
PUR.12 (*)	Au pied	12	9		
PUR.12.330 (*)	Rouleau	12	9		
PUR.16 (*)	Au pied	16a	12		
PUR.16.165 (*)	Rouleau	16a	12		

## Tubulure Tubing

### Tube en polyuréthane impériale Polyurethane tubing imperial



Modèle / Model	Qté	OD (po)	ID (mm)	* Color / couleur
PUR.1/4 (*)	Au pied	1/4	4.2	BK
PUR.1/4.330 (*)	Rouleau	1/4	4.2	C
PUR.3/8 (*)	Au pied	3/8	6.4	R
PUR.3/8.330 (*)	Rouleau	3/8	6.4	BL
PUR.1/2 (*)	Au pied	1/2	8.5	Y
PUR.1/2.330 (*)	Rouleau	1/2	8.5	G
				GR
				O

Tubulure /  
Tubing

### Couteau à tube Tube cutter



Modèle / Model	W.G (g)	Q'ty/Inbox
Tube cutter	30.5	24